

ORDINANCE NO. 0121206

COMMISSIONERS OF KLICKITAT COUNTY, WASHINGTON

IN THE MATTER OF APPLICATION, ZON2006-06, TO AMEND THE KLICKITAT COUNTY ZONING MAP. REZONING APPROXIMATELY 5 ACRES FROM FOREST RESOURCE (FR20) TO RURAL CENTER (RC):

APPLICANT/LANDOWNERS: Hollenbeck Properties  
REPRESENTATIVE: Zoe Wood

WHEREAS, the above matter came before the Planning Commission in a public hearing on October 16, 2006, for the purpose of amending the Klickitat County Zoning map designation of 5 acres. The property is located within a portion of Section 22, T6N, R10E, W.M., off State Hwy 141 (Trout Lake vicinity), and

WHEREAS, following said hearing, the Planning Commission adopted Findings of fact for approval of the request, and

WHEREAS, the Board of County Commissioners conducted a public meeting on December 12, 2006 to consider the recommendation of the Klickitat County Planning Commission, and

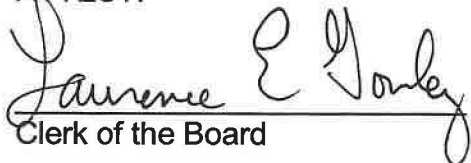
WHEREAS, following a review of the record and the Planning Commission's Findings of Fact, the Board of County Commissioners moved for summary approval of the rezone, and

WHEREAS, the Board of County Commissioners did pass said motion for approval of rezone application ZON2006-06.

NOW THEREFORE, BE IT ORDAINED, that the amendments to the Zoning Map as described in application ZON2006-06 and as shown on the attached exhibit are hereby approved.

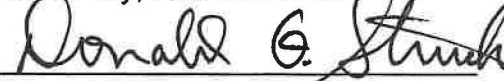
Entered this 12<sup>th</sup> day of December, 2006.

ATTEST:

  
Clerk of the Board

  
Ray Thayer, Chairman

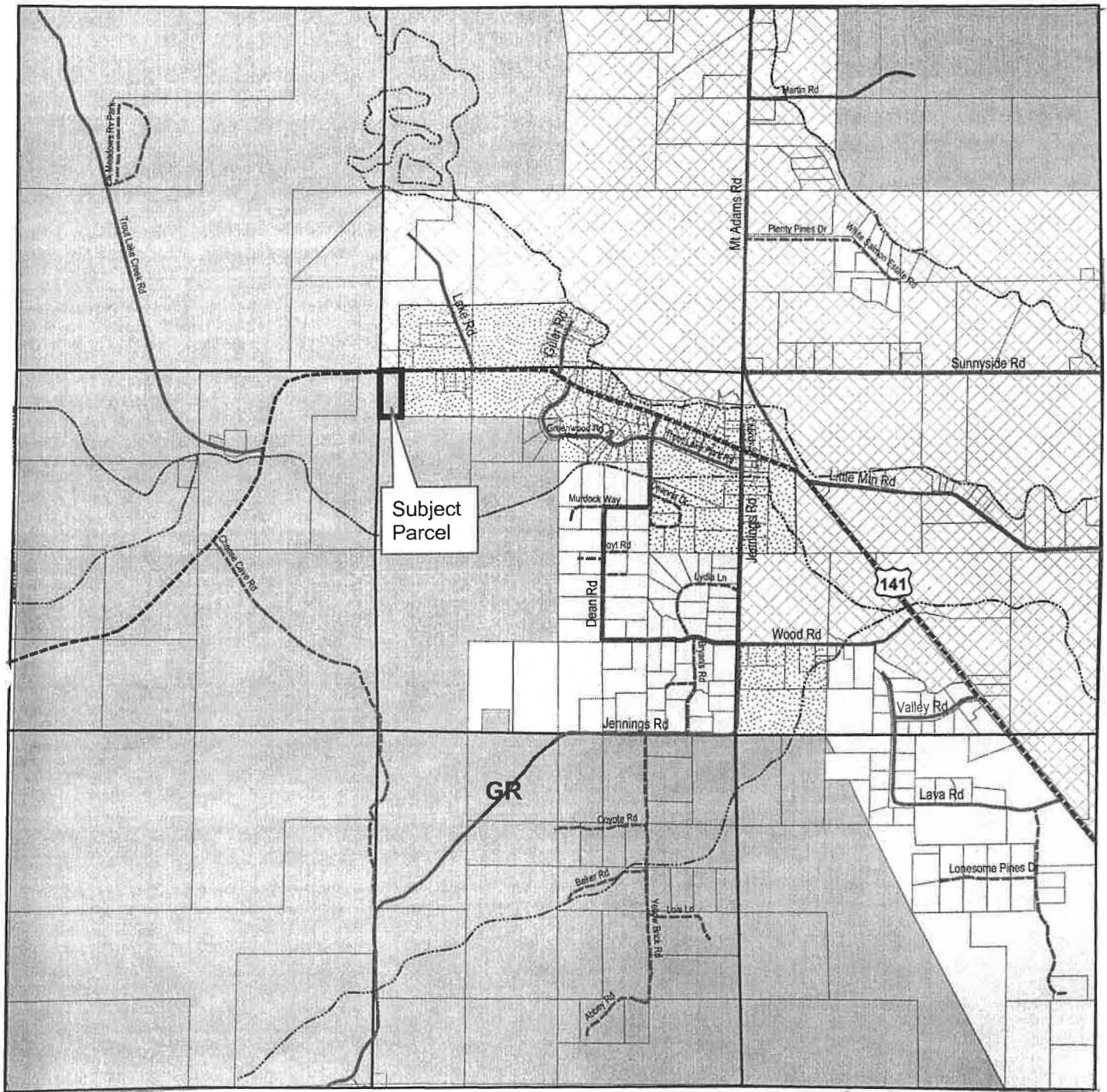
  
Joan Frey, Commissioner

  
Donald G. Struck, Commissioner

Constituting the Klickitat County  
Board of Commissioners  
Klickitat County, Washington

# Rezone Request ZON-2006-06

Rezone of approximately 5 acres from Forest Resource to Rural Center  
Located within the NW1/4 of Section 22, T6N, R10E



## Legend

- Rivers
- County
- Private
- State
- Section Lines
- Parcels
- Extensive Agriculture
- Forest Resource
- General Rural
- Rural Center
- Rural Residential 2
- Subject Parcel



0 700 1,400 2,800 4,200 5,600 Feet

*Ray Thayer*  
Ray Thayer, Chair

*Joan Frey*  
Joan Frey, Commissioner

*Don Struck*  
Don Struck, Commissioner

Constituting the Klickitat County  
Board of Commissioners,  
Klickitat County, WA

Attest: *Jamene E. Galy*  
Clerk of the Board

Vol 119 Page 198

Recorded this \_\_\_\_ day of \_\_\_\_, 2006  
at \_\_\_\_ page \_\_\_\_ of records of  
Klickitat County, WA and recorded in  
Volume \_\_\_\_ of all documents

Klickitat County Auditor