

1
2
3
4
5
6
7
8
9
10
11 STATE OF CALIFORNIA)
12 COUNTY OF RIVERSIDE) ss
13

14 I HEREBY CERTIFY that at a regular meeting of the Board of Supervisors of said county
15 held on October 27, 2015, the foregoing ordinance consisting of 2 Sections was adopted
16 by the following vote:

17 AYES: Jeffries, Tavaglione, Washington and Ashley

18 NAYS: None

19 ABSENT: Benoit
20

21 DATE: October 27, 2015

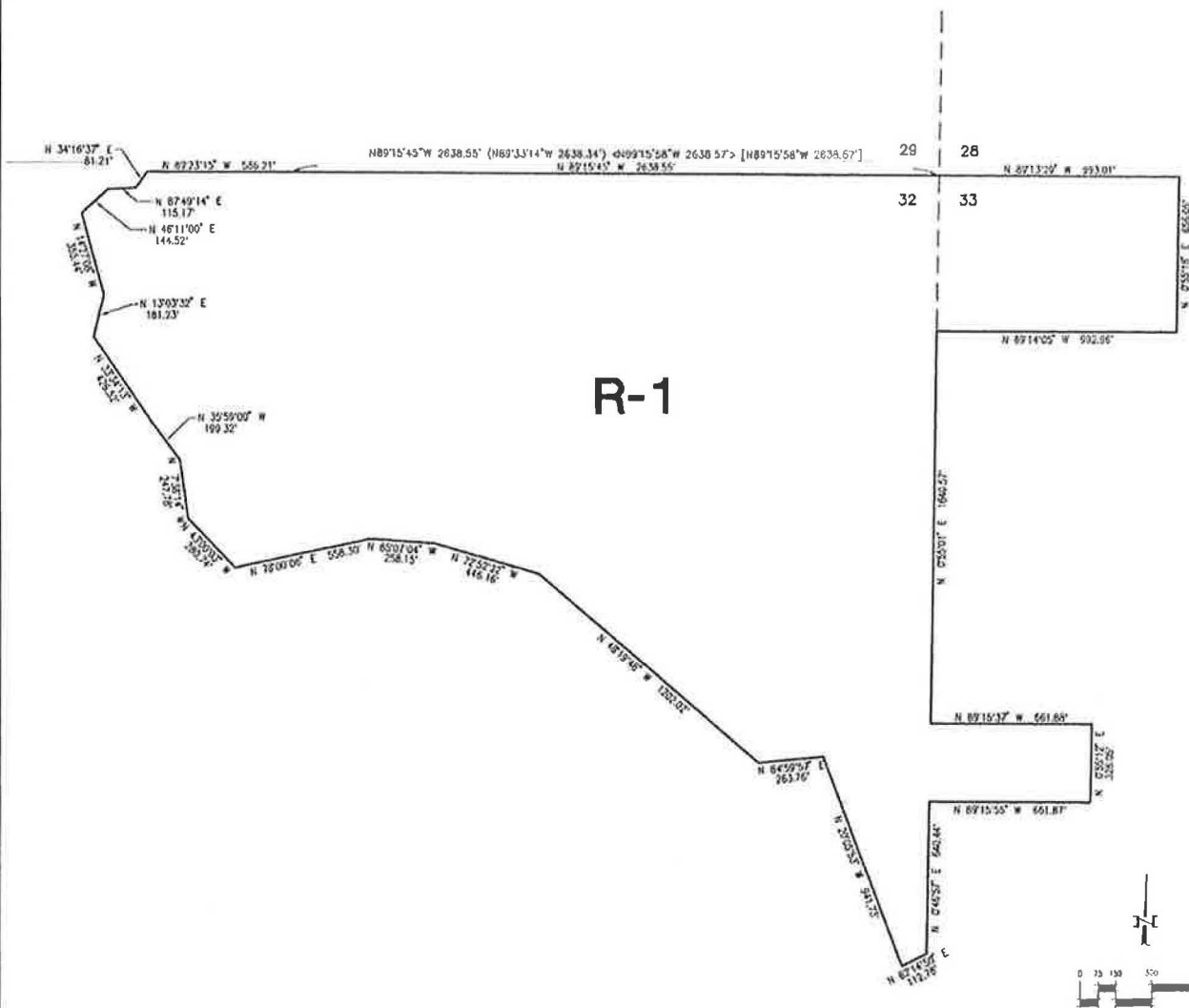
22 KECIA HARPER-IHEM
23 Clerk of the Board

24 BY: 

25 Deputy

26 SEAL
27
28

SECTIONS 32 AND 33, T. 3 S. R. 5 W. S.B.B. & M.

**LEGEND**

R-1

ONE-FAMILY DWELLINGS
MAP NO. 36.058**CHANGE OF OFFICIAL ZONING PLAN
LAKE MATHEWS DISTRICT****A.P.N.**270-070-004
270-080-017
270-090-001
270-090-002CHANGE OF ZONE CASE NO. 7816
AMENDING ORDINANCE NO. 348
ADOPTED BY ORDINANCE NO. 348.4815

RIVERSIDE COUNTY BOARD OF SUPERVISORS