



Scott Hunter
J.R. Rausch
Steven Wolfe

ORDINANCE 023-2024

TO ACCEPT THE DEDICATION OF THE NEW CALIFORNIA HILLS, PHASE 13,
PUBLIC INFRASTRUCTURE

WHEREAS, the City Administration has reported that the improvements for the water lines, sanitary sewers and associated appurtenances shown on the final as built construction plans for the New California Hills, Phase 13, have been satisfactorily completed per City of Marysville specifications, and have been maintained by the developer for a period in excess of one year; and

WHEREAS, the developer has offered for dedication for public use certain land for water lines, sanitary sewers and associated appurtenances as shown on said final as-built construction plans; now, therefore

BE IT ORDAINED BY THE COUNCIL OF THE CITY OF MARYSVILLE, OHIO, That:

SECTION I. Council accepts and approves the final as-built construction plans for the New California Hills, Phase 13, public infrastructure. The Final Plat, Exhibit A, is attached and incorporated into this Dedication Ordinance.

SECTION II. The dedication of the water lines and sanitary sewers, all as shown whereon, are accepted and confirmed.

SECTION III. The Clerk of Council is authorized to cause this dedication to be recorded with the Recorder of Union County as provided by law.

1st Reading April 22, 2024

2nd Reading May 13, 2024

3rd Reading Waived May 13, 2024

Passed: May 13, 2024

APPROVED AS TO FORM:

[Signature]
Law Director Date 4/24/24

[Signature]
PRESIDENT OF COUNCIL

ATTEST:
[Signature]
CLERK OF COUNCIL

EXHIBIT A

GENERAL NOTES

Effective January 3, 2017

1. All sanitary sewers and manholes, including any extension procedures, shall be in accordance with the current rules and regulations of the City of Marysville.
2. All sanitary mains (8" and larger) and service (8") shall be 500-15 pipe meeting the requirements of ASTM D-3035 with the joint gaskets meeting ASTM D-3021.
3. All pipe fittings shall be 500-15 sewer pipe and shall have a two foot service extension installed prior to the manhole being closed and should be placed over the manhole lateral sewer.
4. Seven footers shall be installed to 2" base the full of pipe prior to installation.
5. The contractor shall provide and install 4" x 4" timber cut sleepers at all pipe locations as constructed. The pipes shall extend above the existing or proposed grade, whichever is higher, a minimum of 2'.
6. A 3 foot length of 12" diameter steel pipe or steel shall be placed to the top of the 2" base. The 3 foot length shall extend to the point of use.
7. All water mains are to be separated 10 feet horizontally and 1.5 feet vertically from all parallel sanitary sewers.
8. Minimum 6" water main and sanitary sewer must cross, the water main shall be 1.5 feet above the crown of the sewer pipe. Measurements to be between the outside of pipe walls.
9. Approval of three footers is contingent upon required sanitary sewer operations being approved by the City and recorded prior to construction.
10. Any land use extension during construction shall be reported, as directed by the County Engineer, with 120-150 footed pipe. Pipe will be used to join the sewer, as to intercept and convey to the storm sewer. Trench to be backfilled with compacted granular material.
11. All sanitary sewer lines, with a 12" or larger diameter, shall be installed with extended manholes in line and in excess of 8' center to center in 120' minimum distance.
12. All sanitary sewer lines which cross a water line or storm sewer shall be extended 10 feet beyond the water line or storm sewer.
13. Manholes shall be located and made as directed by the engineer, and no manhole shall be located within 10 feet of any existing or proposed structure. The City Engineer shall provide the location of the manhole. The City Engineer shall provide the location of the manhole. The City Engineer shall provide the location of the manhole.
14. All service connections shall be installed at a minimum grade of 1/4" per foot and shall be constructed of 12" or larger diameter of the main sewer, unless directed otherwise by the engineer. Service connections shall be constructed of 12" or larger diameter of the main sewer, unless directed otherwise by the engineer. Service connections shall be constructed of 12" or larger diameter of the main sewer, unless directed otherwise by the engineer.
15. All manholes shall be 24" of Marysville standard precast concrete manholes as shown on the standard construction drawings. Calling to be 120-150 or equal, with "Marysville Sanitary Sewer" 120-150 on the top.
16. Sanitary sewers shall be tested to the air testing method. The air pressure shall not drop more than 1 psi over 25 ft. in the average time per 100 ft. standard. Contractor shall cooperate with Marysville City Engineer and provide necessary materials for test.
17. All sanitary sewer installed on this project shall be subject to deflection testing. An approved ground line must be used to test through the pipe. After completing the test, a 1/4" or less deflection is acceptable. The maximum deflection shall be 1/4" of the average deflection. The deflection shall be reported, as directed by the engineer. The deflection shall be reported, as directed by the engineer.
18. Temporary buildings shall be placed where necessary on the site, and shall remain in place until removed as directed by the City Engineer.
19. All sanitary sewer shall be installed in excess of 120-150, unless noted, and shall be 120-150, unless noted.
20. Sanitary sewer must meet "10' Slopes Standard".
21. All sanitary sewer lines are to be covered/boxed in prior to the City of Marysville's final acceptance. A copy of the final, with a sanitary sewer, is to be provided to the City Engineer.
22. An inventory of 12" or larger sanitary sewer shall be installed with 120-150 (120-150 Slopes Standard).
23. All sanitary sewer shall be installed with "120-150" or approved equal. (120-150 Slopes Standard).
24. Private sanitary sewer shall be tested to the air testing method. The air pressure shall not drop more than 1 psi over 25 ft. in the average time per 100 ft. standard. Contractor shall cooperate with Marysville City Engineer and provide necessary materials for test.

BACKFILL NOTES

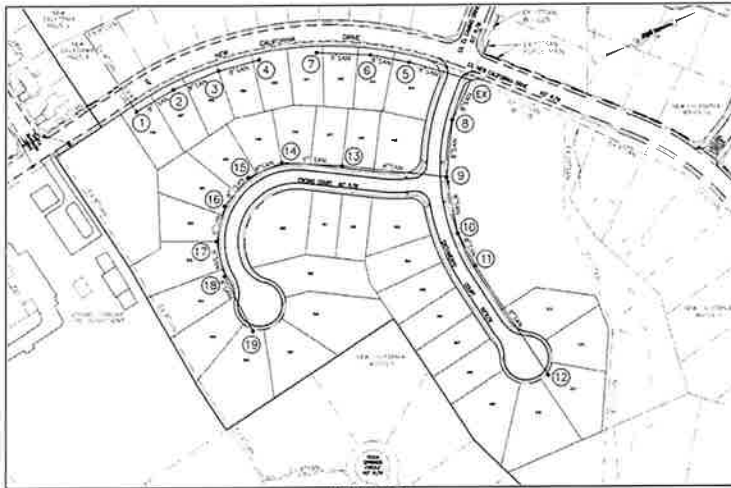
Backfill operations shall conform to the Standard Construction Drawings and meet the specifications listed under Notes 1, 2, and 3.

1. Sanitary sewer, storm, and utility trenches within 3 feet of the edge of pavement shall require 120-150 of maximum dry compacted weight in place or 25% of maximum moisture. Material shall be per 2007 203.07 and Supplemental Specification 103.
2. Storm, sanitary, and utility trenches within 3 feet of the edge of pavement shall require 120-150 of maximum dry compacted weight in place or 25% of maximum moisture. Material shall be per 2007 203.07 and Supplemental Specification 103.
3. Storm, sanitary, and utility trenches within 3 feet of the edge of pavement shall require 120-150 of maximum dry compacted weight in place or 25% of maximum moisture. Material shall be per 2007 203.07 and Supplemental Specification 103.
4. The contractor shall make sufficient number of tests to be performed for water and air testing, and shall make the results available to the City Engineer. The contractor shall make the results available to the City Engineer. The contractor shall make the results available to the City Engineer.
5. Soil tests shall be taken at 10' intervals of sanitary sewer, deepened storm sewer trenches, and water line trenches, which cross the proposed pavement or which is within 3 feet of the edge of the proposed pavement.

JEROME TOWNSHIP, UNION COUNTY, OHIO

NEW CALIFORNIA HILLS XIII SANITARY SEWER IMPROVEMENTS

2020



INDEX MAP
SCALE: 1" = 100'

ITEM	QUANTITY	DESCRIPTION
104	1.0	12" PVC SANITARY PIPE, 10' LONG, 120-150
105	1.0	12" PVC SANITARY PIPE, 10' LONG, 120-150
106	1.0	12" PVC SANITARY PIPE, 10' LONG, 120-150
107	1.0	12" PVC SANITARY PIPE, 10' LONG, 120-150
108	1.0	12" PVC SANITARY PIPE, 10' LONG, 120-150
109	1.0	12" PVC SANITARY PIPE, 10' LONG, 120-150
110	1.0	12" PVC SANITARY PIPE, 10' LONG, 120-150
111	1.0	12" PVC SANITARY PIPE, 10' LONG, 120-150
112	1.0	12" PVC SANITARY PIPE, 10' LONG, 120-150
113	1.0	12" PVC SANITARY PIPE, 10' LONG, 120-150
114	1.0	12" PVC SANITARY PIPE, 10' LONG, 120-150

BENCHMARKS

1. 10' PM SET IN THE NORTH SIDE OF A 10' POLE 25' W/1' OF THE EAST SIDE OF CONCRETE DRIVE TO JEROME TOWNSHIP DEPARTMENT ON THE SOUTH SIDE U.S. HT. 42

2. 10' PM SET IN THE SOUTH EAST CORNER OF A 10' POLE 25' W/1' OF THE EAST SIDE OF CONCRETE DRIVE TO JEROME TOWNSHIP DEPARTMENT ON THE SOUTH SIDE U.S. HT. 42

3. 10' PM SET IN THE SOUTH EAST CORNER OF A 10' POLE 25' W/1' OF THE EAST SIDE OF CONCRETE DRIVE TO JEROME TOWNSHIP DEPARTMENT ON THE SOUTH SIDE U.S. HT. 42

4. 10' PM SET IN THE SOUTH EAST CORNER OF A 10' POLE 25' W/1' OF THE EAST SIDE OF CONCRETE DRIVE TO JEROME TOWNSHIP DEPARTMENT ON THE SOUTH SIDE U.S. HT. 42

5. 10' PM SET IN THE SOUTH EAST CORNER OF A 10' POLE 25' W/1' OF THE EAST SIDE OF CONCRETE DRIVE TO JEROME TOWNSHIP DEPARTMENT ON THE SOUTH SIDE U.S. HT. 42

6. 10' PM SET IN THE SOUTH EAST CORNER OF A 10' POLE 25' W/1' OF THE EAST SIDE OF CONCRETE DRIVE TO JEROME TOWNSHIP DEPARTMENT ON THE SOUTH SIDE U.S. HT. 42

7. 10' PM SET IN THE SOUTH EAST CORNER OF A 10' POLE 25' W/1' OF THE EAST SIDE OF CONCRETE DRIVE TO JEROME TOWNSHIP DEPARTMENT ON THE SOUTH SIDE U.S. HT. 42

8. 10' PM SET IN THE SOUTH EAST CORNER OF A 10' POLE 25' W/1' OF THE EAST SIDE OF CONCRETE DRIVE TO JEROME TOWNSHIP DEPARTMENT ON THE SOUTH SIDE U.S. HT. 42

9. 10' PM SET IN THE SOUTH EAST CORNER OF A 10' POLE 25' W/1' OF THE EAST SIDE OF CONCRETE DRIVE TO JEROME TOWNSHIP DEPARTMENT ON THE SOUTH SIDE U.S. HT. 42

10. 10' PM SET IN THE SOUTH EAST CORNER OF A 10' POLE 25' W/1' OF THE EAST SIDE OF CONCRETE DRIVE TO JEROME TOWNSHIP DEPARTMENT ON THE SOUTH SIDE U.S. HT. 42

11. 10' PM SET IN THE SOUTH EAST CORNER OF A 10' POLE 25' W/1' OF THE EAST SIDE OF CONCRETE DRIVE TO JEROME TOWNSHIP DEPARTMENT ON THE SOUTH SIDE U.S. HT. 42

12. 10' PM SET IN THE SOUTH EAST CORNER OF A 10' POLE 25' W/1' OF THE EAST SIDE OF CONCRETE DRIVE TO JEROME TOWNSHIP DEPARTMENT ON THE SOUTH SIDE U.S. HT. 42

13. 10' PM SET IN THE SOUTH EAST CORNER OF A 10' POLE 25' W/1' OF THE EAST SIDE OF CONCRETE DRIVE TO JEROME TOWNSHIP DEPARTMENT ON THE SOUTH SIDE U.S. HT. 42

14. 10' PM SET IN THE SOUTH EAST CORNER OF A 10' POLE 25' W/1' OF THE EAST SIDE OF CONCRETE DRIVE TO JEROME TOWNSHIP DEPARTMENT ON THE SOUTH SIDE U.S. HT. 42

15. 10' PM SET IN THE SOUTH EAST CORNER OF A 10' POLE 25' W/1' OF THE EAST SIDE OF CONCRETE DRIVE TO JEROME TOWNSHIP DEPARTMENT ON THE SOUTH SIDE U.S. HT. 42

16. 10' PM SET IN THE SOUTH EAST CORNER OF A 10' POLE 25' W/1' OF THE EAST SIDE OF CONCRETE DRIVE TO JEROME TOWNSHIP DEPARTMENT ON THE SOUTH SIDE U.S. HT. 42

17. 10' PM SET IN THE SOUTH EAST CORNER OF A 10' POLE 25' W/1' OF THE EAST SIDE OF CONCRETE DRIVE TO JEROME TOWNSHIP DEPARTMENT ON THE SOUTH SIDE U.S. HT. 42

18. 10' PM SET IN THE SOUTH EAST CORNER OF A 10' POLE 25' W/1' OF THE EAST SIDE OF CONCRETE DRIVE TO JEROME TOWNSHIP DEPARTMENT ON THE SOUTH SIDE U.S. HT. 42

19. 10' PM SET IN THE SOUTH EAST CORNER OF A 10' POLE 25' W/1' OF THE EAST SIDE OF CONCRETE DRIVE TO JEROME TOWNSHIP DEPARTMENT ON THE SOUTH SIDE U.S. HT. 42

20. 10' PM SET IN THE SOUTH EAST CORNER OF A 10' POLE 25' W/1' OF THE EAST SIDE OF CONCRETE DRIVE TO JEROME TOWNSHIP DEPARTMENT ON THE SOUTH SIDE U.S. HT. 42

21. 10' PM SET IN THE SOUTH EAST CORNER OF A 10' POLE 25' W/1' OF THE EAST SIDE OF CONCRETE DRIVE TO JEROME TOWNSHIP DEPARTMENT ON THE SOUTH SIDE U.S. HT. 42

22. 10' PM SET IN THE SOUTH EAST CORNER OF A 10' POLE 25' W/1' OF THE EAST SIDE OF CONCRETE DRIVE TO JEROME TOWNSHIP DEPARTMENT ON THE SOUTH SIDE U.S. HT. 42

23. 10' PM SET IN THE SOUTH EAST CORNER OF A 10' POLE 25' W/1' OF THE EAST SIDE OF CONCRETE DRIVE TO JEROME TOWNSHIP DEPARTMENT ON THE SOUTH SIDE U.S. HT. 42

24. 10' PM SET IN THE SOUTH EAST CORNER OF A 10' POLE 25' W/1' OF THE EAST SIDE OF CONCRETE DRIVE TO JEROME TOWNSHIP DEPARTMENT ON THE SOUTH SIDE U.S. HT. 42

25. 10' PM SET IN THE SOUTH EAST CORNER OF A 10' POLE 25' W/1' OF THE EAST SIDE OF CONCRETE DRIVE TO JEROME TOWNSHIP DEPARTMENT ON THE SOUTH SIDE U.S. HT. 42

26. 10' PM SET IN THE SOUTH EAST CORNER OF A 10' POLE 25' W/1' OF THE EAST SIDE OF CONCRETE DRIVE TO JEROME TOWNSHIP DEPARTMENT ON THE SOUTH SIDE U.S. HT. 42

27. 10' PM SET IN THE SOUTH EAST CORNER OF A 10' POLE 25' W/1' OF THE EAST SIDE OF CONCRETE DRIVE TO JEROME TOWNSHIP DEPARTMENT ON THE SOUTH SIDE U.S. HT. 42

28. 10' PM SET IN THE SOUTH EAST CORNER OF A 10' POLE 25' W/1' OF THE EAST SIDE OF CONCRETE DRIVE TO JEROME TOWNSHIP DEPARTMENT ON THE SOUTH SIDE U.S. HT. 42

29. 10' PM SET IN THE SOUTH EAST CORNER OF A 10' POLE 25' W/1' OF THE EAST SIDE OF CONCRETE DRIVE TO JEROME TOWNSHIP DEPARTMENT ON THE SOUTH SIDE U.S. HT. 42

30. 10' PM SET IN THE SOUTH EAST CORNER OF A 10' POLE 25' W/1' OF THE EAST SIDE OF CONCRETE DRIVE TO JEROME TOWNSHIP DEPARTMENT ON THE SOUTH SIDE U.S. HT. 42

31. 10' PM SET IN THE SOUTH EAST CORNER OF A 10' POLE 25' W/1' OF THE EAST SIDE OF CONCRETE DRIVE TO JEROME TOWNSHIP DEPARTMENT ON THE SOUTH SIDE U.S. HT. 42

32. 10' PM SET IN THE SOUTH EAST CORNER OF A 10' POLE 25' W/1' OF THE EAST SIDE OF CONCRETE DRIVE TO JEROME TOWNSHIP DEPARTMENT ON THE SOUTH SIDE U.S. HT. 42

33. 10' PM SET IN THE SOUTH EAST CORNER OF A 10' POLE 25' W/1' OF THE EAST SIDE OF CONCRETE DRIVE TO JEROME TOWNSHIP DEPARTMENT ON THE SOUTH SIDE U.S. HT. 42

34. 10' PM SET IN THE SOUTH EAST CORNER OF A 10' POLE 25' W/1' OF THE EAST SIDE OF CONCRETE DRIVE TO JEROME TOWNSHIP DEPARTMENT ON THE SOUTH SIDE U.S. HT. 42

35. 10' PM SET IN THE SOUTH EAST CORNER OF A 10' POLE 25' W/1' OF THE EAST SIDE OF CONCRETE DRIVE TO JEROME TOWNSHIP DEPARTMENT ON THE SOUTH SIDE U.S. HT. 42

36. 10' PM SET IN THE SOUTH EAST CORNER OF A 10' POLE 25' W/1' OF THE EAST SIDE OF CONCRETE DRIVE TO JEROME TOWNSHIP DEPARTMENT ON THE SOUTH SIDE U.S. HT. 42

37. 10' PM SET IN THE SOUTH EAST CORNER OF A 10' POLE 25' W/1' OF THE EAST SIDE OF CONCRETE DRIVE TO JEROME TOWNSHIP DEPARTMENT ON THE SOUTH SIDE U.S. HT. 42

38. 10' PM SET IN THE SOUTH EAST CORNER OF A 10' POLE 25' W/1' OF THE EAST SIDE OF CONCRETE DRIVE TO JEROME TOWNSHIP DEPARTMENT ON THE SOUTH SIDE U.S. HT. 42

39. 10' PM SET IN THE SOUTH EAST CORNER OF A 10' POLE 25' W/1' OF THE EAST SIDE OF CONCRETE DRIVE TO JEROME TOWNSHIP DEPARTMENT ON THE SOUTH SIDE U.S. HT. 42

40. 10' PM SET IN THE SOUTH EAST CORNER OF A 10' POLE 25' W/1' OF THE EAST SIDE OF CONCRETE DRIVE TO JEROME TOWNSHIP DEPARTMENT ON THE SOUTH SIDE U.S. HT. 42

41. 10' PM SET IN THE SOUTH EAST CORNER OF A 10' POLE 25' W/1' OF THE EAST SIDE OF CONCRETE DRIVE TO JEROME TOWNSHIP DEPARTMENT ON THE SOUTH SIDE U.S. HT. 42

42. 10' PM SET IN THE SOUTH EAST CORNER OF A 10' POLE 25' W/1' OF THE EAST SIDE OF CONCRETE DRIVE TO JEROME TOWNSHIP DEPARTMENT ON THE SOUTH SIDE U.S. HT. 42

43. 10' PM SET IN THE SOUTH EAST CORNER OF A 10' POLE 25' W/1' OF THE EAST SIDE OF CONCRETE DRIVE TO JEROME TOWNSHIP DEPARTMENT ON THE SOUTH SIDE U.S. HT. 42

44. 10' PM SET IN THE SOUTH EAST CORNER OF A 10' POLE 25' W/1' OF THE EAST SIDE OF CONCRETE DRIVE TO JEROME TOWNSHIP DEPARTMENT ON THE SOUTH SIDE U.S. HT. 42

45. 10' PM SET IN THE SOUTH EAST CORNER OF A 10' POLE 25' W/1' OF THE EAST SIDE OF CONCRETE DRIVE TO JEROME TOWNSHIP DEPARTMENT ON THE SOUTH SIDE U.S. HT. 42

46. 10' PM SET IN THE SOUTH EAST CORNER OF A 10' POLE 25' W/1' OF THE EAST SIDE OF CONCRETE DRIVE TO JEROME TOWNSHIP DEPARTMENT ON THE SOUTH SIDE U.S. HT. 42

47. 10' PM SET IN THE SOUTH EAST CORNER OF A 10' POLE 25' W/1' OF THE EAST SIDE OF CONCRETE DRIVE TO JEROME TOWNSHIP DEPARTMENT ON THE SOUTH SIDE U.S. HT. 42

48. 10' PM SET IN THE SOUTH EAST CORNER OF A 10' POLE 25' W/1' OF THE EAST SIDE OF CONCRETE DRIVE TO JEROME TOWNSHIP DEPARTMENT ON THE SOUTH SIDE U.S. HT. 42

49. 10' PM SET IN THE SOUTH EAST CORNER OF A 10' POLE 25' W/1' OF THE EAST SIDE OF CONCRETE DRIVE TO JEROME TOWNSHIP DEPARTMENT ON THE SOUTH SIDE U.S. HT. 42

50. 10' PM SET IN THE SOUTH EAST CORNER OF A 10' POLE 25' W/1' OF THE EAST SIDE OF CONCRETE DRIVE TO JEROME TOWNSHIP DEPARTMENT ON THE SOUTH SIDE U.S. HT. 42

51. 10' PM SET IN THE SOUTH EAST CORNER OF A 10' POLE 25' W/1' OF THE EAST SIDE OF CONCRETE DRIVE TO JEROME TOWNSHIP DEPARTMENT ON THE SOUTH SIDE U.S. HT. 42

52. 10' PM SET IN THE SOUTH EAST CORNER OF A 10' POLE 25' W/1' OF THE EAST SIDE OF CONCRETE DRIVE TO JEROME TOWNSHIP DEPARTMENT ON THE SOUTH SIDE U.S. HT. 42

53. 10' PM SET IN THE SOUTH EAST CORNER OF A 10' POLE 25' W/1' OF THE EAST SIDE OF CONCRETE DRIVE TO JEROME TOWNSHIP DEPARTMENT ON THE SOUTH SIDE U.S. HT. 42

54. 10' PM SET IN THE SOUTH EAST CORNER OF A 10' POLE 25' W/1' OF THE EAST SIDE OF CONCRETE DRIVE TO JEROME TOWNSHIP DEPARTMENT ON THE SOUTH SIDE U.S. HT. 42



VICINITY MAP
SCALE: 1" = 1 MILE

UTILITY COMPANIES

- | | |
|--|---|
| COLUMBIA GAS OF OHIO
280 W. NATIONWIDE BOULEVARD
COLUMBUS, OH 43215
614-460-5400 | OHIO UTILITIES PROTECTION SERVICE
1-800-362-2764 |
| UNION RURAL ELECTRIC
15461 U.S. 30 E.
MARYSVILLE, OHIO 43040
614-337-8422 | CITY OF MARYSVILLE
WATERWATER DEPARTMENT
12401 BRECHER-CAMBLE ROAD
MARYSVILLE, OHIO 43040
P. (937) 645-7344 |
| CHARTER COMMUNICATIONS
1300 COLUMBUS-BANDUSKY ROAD
MARIETTA, OHIO 43022
760-25-0001 | CITY OF MARYSVILLE
DIVISION OF WATER
209 S. MAIN STREET
MARYSVILLE, OHIO 43040
P. (937) 645-7300 |

APPROVALS

THE CITY OF MARYSVILLE HEREBY APPROVES THIS PLAN SUBJECT ONLY TO THE EXTENT OF THE CITY ENGINEER'S AND PROFESSIONAL ENGINEER'S SIGNATURES. ALL TECHNICAL DETAILS REMAIN THE RESPONSIBILITY OF THE PROFESSIONAL ENGINEER AND HIS FIRM AND CERTIFICATE OF PRACTICE.

[Signature] 11/4/20
DATE
[Signature] 10/23/20
DATE
[Signature] 10/23/20
DATE
[Signature] 3/7/22
DATE

PLAN INDEX

- SHEET NO. 1 - TITLE & INDEX SHEET
SHEET NO. 2 - PLAN & PROFILE SHEET
SHEET NO. 3 - PLAN & PROFILE SHEET
SHEET NO. 4 - DETAIL SHEET

STANDARD DRAWINGS

THE CITY OF MARYSVILLE HEREBY APPROVES THIS PLAN SUBJECT ONLY TO THE EXTENT OF THE CITY ENGINEER'S AND PROFESSIONAL ENGINEER'S SIGNATURES. ALL TECHNICAL DETAILS REMAIN THE RESPONSIBILITY OF THE PROFESSIONAL ENGINEER AND HIS FIRM AND CERTIFICATE OF PRACTICE.

EVERGREEN LAND COMPANY
6295 COSGRAY ROAD • DUBLIN, OHIO 43016
(614) 899-3310 • FAX (614) 899-6669

CHIO801.org
Where We're Strong

WILLIAM J. PIZZINO, P.E.
PIZZINO ENGINEERING & CONSULTING, LLC
3485 STATE ROUTE 161, PLAIN CITY, OHIO 43064
(614) 325-1454
PIZZINOENGINEERING.COM

1
4

[illegible]

2020

City of Mayaguez
Under the Niles to the San Felipe Plaza
Recessed parking shall conform to the National Convention Ordinance
and meet the 21'-0" and 20'-0" and 20'-0" and 20'-0"

Dimensions outside of the sidewalk of streets shall include 25% of maximum dry monthly
water if there is a wet 25% of maximum monthly water and per 2001 2001 and
Summer water pool on 10.5

[illegible]

COLUMBIA GAS OF OHIO
390 N VANDANOE BOULEVARD
COLUMBUS, OH 43215
1-814-460-5400

UNION RURAL ELECTRIC
15461 U.S. 36 E
MARIYVILLE, OHIO 43040
1-937-642-1616

CHARTER COMMUNICATIONS
3100 INTL - HANGAR ROAD
COLUMBUS, OH 43204
1-814-235-3344

FRONIER COMMUNICATIONS
1200 COLUMBUS-SANDUSKY RD
MARION, OH 43302
740-383-5551

OHIO UTILITIES PROTECTION SERVICE
1-800-382-2754

WASTEWATER DEPARTMENT
BEECHER-CAMBLE ROAD
MARIYVILLE, OHIO 43040
P (937) 646-2344
F (937) 646-7245

CITY OF MARIYVILLE
DIVISION OF WATER
209 S MAIN STREET
MARIYVILLE, OHIO 43040
P (937) 643-7350
F (937) 646-7333

* SUBSURFACE DRAINAGE SYSTEM MAY EXIST ON THIS SITE. ALL DRAINAGE TIES ENCOUNTERED DURING CONSTRUCTION SHALL BE CONNECTED TO THE STORM SEWER SYSTEM AND MUST BE REPAIRED OR REPLACED AS NECESSARY.

THE UNION COUNTY ENGINEER, CITY OF MARYSVILLE, AND CITY OF COLUMBUS
STANDARD CONSTRUCTION ORDINANCES LISTED ON THIS PLAN SHALL BE
CONSIDERED A PART HEREOF.

ORDINANCE NO.	CITY OF MARYSVILLE APPROVED DATE OF	CITY OF COLUMBUS APPROVED DATE OF
ORDINANCE NO. 7	4-18-08	SHEET 5 OF 21
ORDINANCE NO. 11	4-18-08	SHEET 16 OF 21
ORDINANCE NO. 13	WTR-09	SHEET 21 OF 21
ORDINANCE NO. 20		S. 21C, 21D, 21E, 21F

#1 "B" SET IN THE NORTH SIDE OF A U-POLE 25' +/- OF THE EAST SIDE OF CONCRETE LANE TO JEROME TOWNSHIP FIRE DEPARTMENT ON THE SOUTH SIDE U.S. RT. 42.
ELEV = 920.63

#2 "C" CUT ON THE SOUTH EAST PORT OF A FIRE HYDRANT AT THE SOUTHEAST CORNER OF NEW CALIFORNIA DR. AND U.S. 42. 42.
ELEV = 382.51

VICINITY MAP

SHEET NO	1	WATER
SHEET NO	2	NOTES & QUANTITIES
SHEET NO	3	SITE UTILITIES PLAN
SHEET NO	4	SACRAMENTO COURT PLAN & PROFILE
SHEET NO	5	ENCINO COURT PLAN & PROFILE
SHEET NO	6	STORM SEWER PROFILES
SHEET NO	7	SITE GRADING PLAN
SHEET NO	8	INTERSECTION & SIDEWALK DETAILS
SHEET NO	9	STREET & CUL-DE-SAC DETAILS
SHEET NO	10	EROSION CONTROL NOTES & DETAILS
SHEET NO	11	INTERSECTION SIGHT DISTANCE PLAN
SHEET NO	12	COUNTY DITCH MAINTENANCE ITEMS

5 GRAY ROAD • DUBLIN, OHIO 43016
419.885.5510 • FAX 614.885.4420[illegible][illegible]
$$\frac{3}{7} \div \frac{2}{5}$$

DATE 2/14/22

DATE 3/3/22

9/25/2020
DATE
