



Alan Seymour
Deborah Groat
Aaron J. Carpenter

ORDINANCE 024-2020

TO ACCEPT THE DEDICATION OF THE JEROME GRAND SUBDIVISION PUBLIC INFRASTRUCTURE

WHEREAS, the City Administration has reported that the improvements for the sanitary sewers and water lines shown on the final as-built construction plans for the Jerome Grand Subdivision development have been satisfactorily completed per City of Marysville Specifications, and have been maintained by the developer for a period in excess of one year; and

WHEREAS, the developer has offered for dedication for public use certain land for water lines, sanitary sewer lines, and associated appurtenances, as shown on said final as-built construction plans, now; therefore,

BE IT ORDAINED BY THE COUNCIL OF THE CITY OF MARYSVILLE, OHIO, That:

SECTION I. Council accepts and approves the dedication of the final as-built waterline and sanitary sewer plans for the Jerome Grand development.

SECTION II. The Offsight Public Waterline Improvement Plan and the Public Sanitary Sewer Improvement Plan, attached to this Dedication Ordinance as Exhibit A, of the sanitary sewers and water lines, all as shown thereon, are accepted and confirmed.

SECTION III. The Clerk of Council and the President of Council are hereby authorized and directed to sign this document as proof of dedication and acceptance in coordination with the City Engineer.

1st Reading May 11, 2020

2nd Reading May 26, 2020

3rd Reading June 8, 2020

Passed: June 8, 2020

APPROVED AS TO FORM:

[Signature]

Law Director Date 5/5/20

[Signature]

MAYOR/PRESIDENT OF COUNCIL

ATTEST:

[Signature]

CLERK OF COUNCIL

Exhibit A

JEROME TOWNSHIP, UNION COUNTY
OFFSITE PUBLIC WATERLINE IMPROVEMENT PLAN
FOR
JEROME GRAND
AT JACQUEMIN FARMS
2018

SHEET INDEX

Title Sheet	1
General Notes	2
General Notes, Quantities & Details	3
Waterline Plan	4-5
Waterline Profile	6-7
Gravel & Sediment Control Details	8

STANDARD CONSTRUCTION DRAWINGS

The Standard Construction Drawings listed on these plans are to be considered a part thereof.

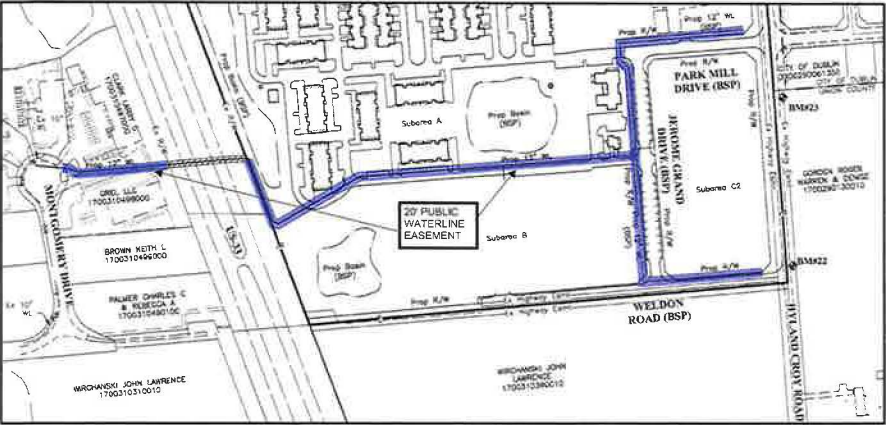
City of Marysville	Union County
WTR-17	WTR-26
WTR-18	WTR-27
WTR-23	

BENCH MARKS

Bench Mark	Elevation	Description
BM07	936.33	Centered square on the northwest corner of a concrete light pole located at the northeast corner of the intersection of Hyland-Cray Road and Post Road.
BM08	936.34	Reinforced spike in the west side of a wooden utility pole located on the east side of Hyland-Cray Road, being the south utility pole north of the intersection with Post Road.
BM09	934.78	Reinforced spike in the west side of a wooden utility pole located on the east side of Hyland-Cray Road, being the north utility pole north of the intersection with Post Road and is back of Residence #155.
BM10	934.93	Reinforced spike in the west side of a wooden utility pole located on the east side of Hyland-Cray Road, being the kiosk/utility pole north of the intersection with Post Road.
BM11	933.38	Reinforced spike in the south side of a wooden utility pole located on the west side of Hyland-Cray Road, being the second utility pole south of the intersection with Park Mill Drive.

FEMA NOTE:
According to the Federal Emergency Management Agency's Flood Insurance Rate Map (dated June 17, 2008), the subject parcel shown herein lies within Zone "X" (areas determined to be outside of the 0.2% annual chance floodplain), Community Panel No. 3004600131. X.

NOTE:
See Public Roadway Improvements Plan for Jerome Grand at Jacquemin Farms Public Waterline Improvements.



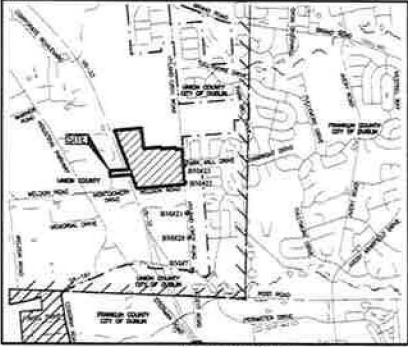
INDEX MAP



DEVELOPER/OWNER
Schottenstein Real Estate Group
Wes Smith
2 Easton Oval, Suite 510
Columbus, Ohio 43219
Tel: (614) 418-8900
Fax: (614) 418-8920
Email: wes@aregroup.com

ENGINEER
EMHT Inc.
Patricia A. Brown, PE
3500 New Albany Wood
Columbus, Ohio 43054
Tel: (614) 775-4500
Fax: (614) 775-4804
Email: pabrown@emht.com

OHIO
Utilities Protection
SERVICE
Call before you dig
800-362-2764 or 8-1-1
www.oitp.org



LOCATION MAP

Not to Scale

CITY OF MARYSVILLE - PUBLIC WATERLINE ONLY

The City of Marysville signatures on this plan (below) signify only concurrence with the general purposes and general location of the proposed public waterline improvements only. All technical details remain the responsibility of the Professional Engineer who prepared and certified these plans.

City Of Marysville, City Engineer	Date
City Of Marysville, Public Service Director	Date
City Of Marysville, City Manager	Date
City Of Marysville, Mayor	Date

UNION COUNTY APPROVAL

The Union County Engineer's Engineering, Construction and Surveying Standards (1997) the current standard specifications at the state of Ohio Department of Transportation (ODOT) (English units), including standard drawings and supplemental specifications listed shall govern this improvement.

The Union County Engineer's signature on this plan signifies only concurrence with the general purpose and location of the proposed improvements with respect to improvements within the right-of-way. Stormwater management, erosion and sediment control. All technical details remain the responsibility of the professional engineer who prepared and certified these plans.

Union County Engineer	Date
-----------------------	------

ENGINEER
This is to certify that good engineering practices have been utilized in the design of this project and that all of the minimum standards as delineated in the Union County Design, Construction and Surveying Standards Manual and City of Marysville "Water Division Specifications" have been met, including those standards greater than minimum where, in my opinion, they are needed to protect the safety of the public. Any variances to the above standards are consistent with sound engineering practice and are not detrimental to the public safety and convenience. These variances have been listed herein and have been approved by Union County, and/or the City of Marysville.

PATRICIA A. BROWN
PE - 73813

Patricia A. Brown
Registered Engineer's Signature and Seal

07/14/18
Date

Exhibit A

JEROME TOWNSHIP, UNION COUNTY, OHIO PUBLIC & PRIVATE SANITARY SEWER IMPROVEMENTS PLAN FOR JEROME GRAND AT JACQUEMIN FARMS 2018

SHEET INDEX

Title Sheet	1
General Notes & Quantities	2
Utility Area Map	3
Sanitary Sewer Plan	4
Public Sanitary Sewer Profile	5
Sanitary Sewer Profile	6

Horizontal Datum

The coordinates shown on this map are based on the Ohio State Plane Coordinate System, South Zone NAD 83 (1983). Said coordinates registered from a local traverse which was tied (referenced) to said coordinate system by GPS observations of Franklin County Engineering Department monuments FCO5 7772 and FCO5 7789. The grid to ground scale factor (1.00002467218934) was applied at the location of Northing 767062.292, Easting 1776107.732, and Elevation 535.437 feet.

BENCH MARKS

(NAVD 1988)

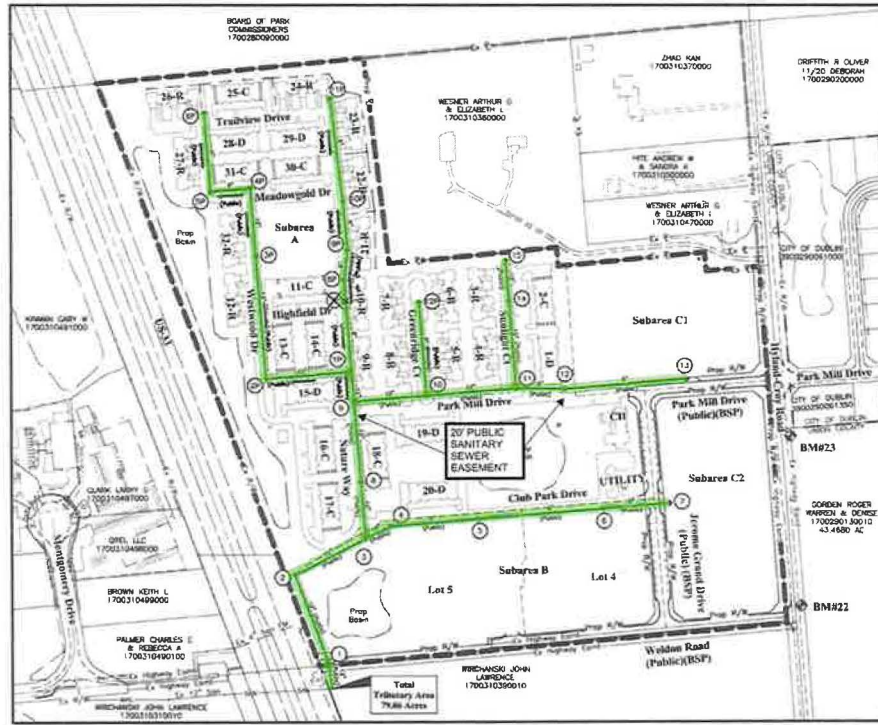
Bench Mark	Elevation	Description
BM07	456.33	Closest equator on the northeast corner of a concrete light pole base located at the northeast corner of the intersection of Highland-Croy Road and Post Road.
BM030	906.34	Railroad spike in the west side of a wooden utility pole located on the east side of Highland-Croy Road, being the southern utility pole north of the intersection with Post Road.
BM021	904.76	Railroad spike in the west side of a wooden utility pole located on the east side of Highland-Croy Road, being the fourth utility pole north of the intersection with Post Road and in front of Residence #7150.
BM022	954.83	Railroad spike in the west side of a wooden utility pole located on the east side of Highland-Croy Road, being the fourth utility pole north of the intersection with Post Road.
BM023	935.35	Railroad spike in the south side of a wooden utility pole located on the west side of Highland-Croy Road, being the second utility pole south of the intersection with Park Mill Drive.

STANDARD CONSTRUCTION DRAWINGS

CITY OF MARYSVILLE

The Standard Construction Drawings listed on these plans are to be considered a part thereof.

SAS-01	SAS-02	SAS-03	SAS-04
SAS-05	SAS-06	SAS-07	SAS-08
SAS-09	SAS-10	SAS-11	SAS-12
SAS-13	SAS-14	SAS-15	SAS-16



INDEX MAP

Scale: 1" = 200'

GRAPHIC SCALE



800-362-2764 or 8-1-1
www.oups.org

DEVELOPER/OWNER
Schottenstein Real Estate Group
Attn: Smith
2 Eastern Oval, Suite 510
Columbus, Ohio 43219
Tel: (614) 418-8800
Fax: (614) 418-8920
Email: smith@realestate.com

ENGINEER
EMHT Inc.
Patricia A. Brown, PE
5500 New Albany Road
Columbus, Ohio 43054
Tel: (614) 775-4500
Fax: (614) 775-4804
Email: pbrown@emht.com



LOCATION MAP

Not to Scale

CITY OF MARYSVILLE, OHIO APPROVAL

The signatures below signify only concurrence with the purpose and general location of the project. All technical details remain the responsibility of the Engineer preparing the plans.

[Signature] 3/23/18
City Manager, City of Marysville, Ohio
[Signature] 3/22/18
City Engineer, City of Marysville, Ohio
[Signature] 3/22/2018
Public Service Director, City of Marysville, Ohio
[Signature] 3/22/2018
City Engineer, City of Marysville, Ohio

UNION COUNTY APPROVAL

The Union County Engineer's Engineering, Construction and Surveying Standards, (1997) the current standard specifications of the state of Ohio Department of Transportation (ODOT) (English units), including standard drawings and supplemental specifications listed shall govern this improvement.

The Union County Engineer's signature on this plan signifies only concurrence with the general purpose and location of the proposed improvements with respect to improvements within the right-of-way, stormwater management, erosion and sediment control. All technical details remain the responsibility of the professional engineer who prepared and certified these plans.

[Signature] 3/22/18
Union County Engineer

PREPARED BY:



ENGINEER
This is to certify that good engineering practices have been utilized in the design of this project and that all of the minimum standards as defined in the Union County Design, Construction and Surveying Standards Manual and City of Marysville "Countywide Smart Specifications" have been met, including those standards greater than minimum where, in my opinion, they are needed to protect the safety of the public. Any variances to the above standards are consistent with sound engineering practice and are not detrimental to the public safety and convenience. These variances have been listed herein and have been approved by Union County, and/or the City of Marysville.

[Signature] 3/22/18
Registered Engineer's Signature and Seal