

ORDINANCE # 21-20

AN ORDINANCE AMENDING TITLE 20, CHAPTER 6 – SEC. 4, “DISCHARGE OF FIREWORKS” OF THE SANDY CITY CODE BY UPDATING EXHIBIT “B” WITH A NEW MAP DEPICTING PROHIBITED AREAS FOR THE DISCHARGE OF FIREWORKS WITHIN SANDY CITY AND ALSO PROVIDING A SAVING CLAUSE AND AN EFFECTIVE DATE FOR THE ORDINANCE

WHEREAS, pursuant to Utah Code §10-8-47, §15A-5-202.5, and §53-7-225, the City has the authority to regulate the discharge of fireworks; and

WHEREAS, Sandy City’s fire code official has determined that hazardous environmental conditions exist within certain areas of the City meeting the statutory description; and

WHEREAS, on May 1, 2018, the City Council heard evidence from the City’s fire code official concerning hazardous environmental conditions within areas of the City and approved a map depicting areas of the City where the discharge of fireworks would be prohibited; and

WHEREAS, since that time, local extreme drought conditions, combined with record high temperatures have exacerbated and dramatically increased the risk of wildfires within the City; and

WHEREAS, the City’s fire code official has provided a subsequent assessment of the increased fire risk within the City and accompanying recommendations to address the risk; and

WHEREAS, the City Council has now determined that extreme drought conditions and record high temperatures create existing hazardous conditions, and therefore the discharge of fireworks presents a significant risk of igniting fires, which necessitates control over the discharge of fireworks within, into, and over the high risk areas identified by the City’s fire code official; and

WHEREAS, the City Council has previously defined areas presenting particular ignition hazards; and

WHEREAS, the City Council wishes to update and identify the areas where the discharge of fireworks presents a significant hazard and to prohibit the discharge of fireworks within, into, and over such areas as described in City Ordinance and also as depicted on the map attached thereto; and

NOW, THEREFORE, BE IT ORDAINED by the City Council of Sandy City, State of Utah, as follows:

Section 1. Title 20, Chapter 6 – Sec. 4, Exhibit “B” of the Sandy City Code is hereby updated with a new map depicting prohibited areas for the discharge of fireworks within the

City, which is attached as **Exhibit "A"** and incorporated in this ordinance, which is hereby approved and adopted.

Section 2. All former ordinances or parts thereof conflicting or inconsistent with the provisions of this ordinance are hereby repealed.

Section 3. The provisions of this ordinance shall be severable; and if any provision thereof, or the application of such provision under any circumstance is held invalid or unconstitutional by a court of competent jurisdiction, it shall not affect any other provision of this ordinance, or the application in a different circumstance.

Section 4. This ordinance shall become effective upon publication of a summary thereof.

PASSED AND APPROVED this 22 day of June, 2021.

DocuSigned by:
Cyndi Sharkey
02C671B7B4514E8...
Cyndi Sharkey, Sandy City Council Chair

ATTEST:

DocuSigned by:
Wendy D
688E7E8272014B1...
City Recorder

PRESENTED to the Mayor of Sandy City for his approval this 25th day of June, 2021.

APPROVED this 25th day of June, 2021.

DocuSigned by:
Kurt Bradburn
1921B3E86D3D4D3...
Kurt Bradburn, Mayor

ATTEST:

DocuSigned by:
Wendy D
688E7E8272014B1...
City Recorder

RECORDED this 25 day of June, 2021.





SUMMARY PUBLISHED this ²⁵ day of June, 2021.

Exhibit “A”

**Restricted Areas
for Fireworks, Fires
with 1300 E Border
Sandy City**

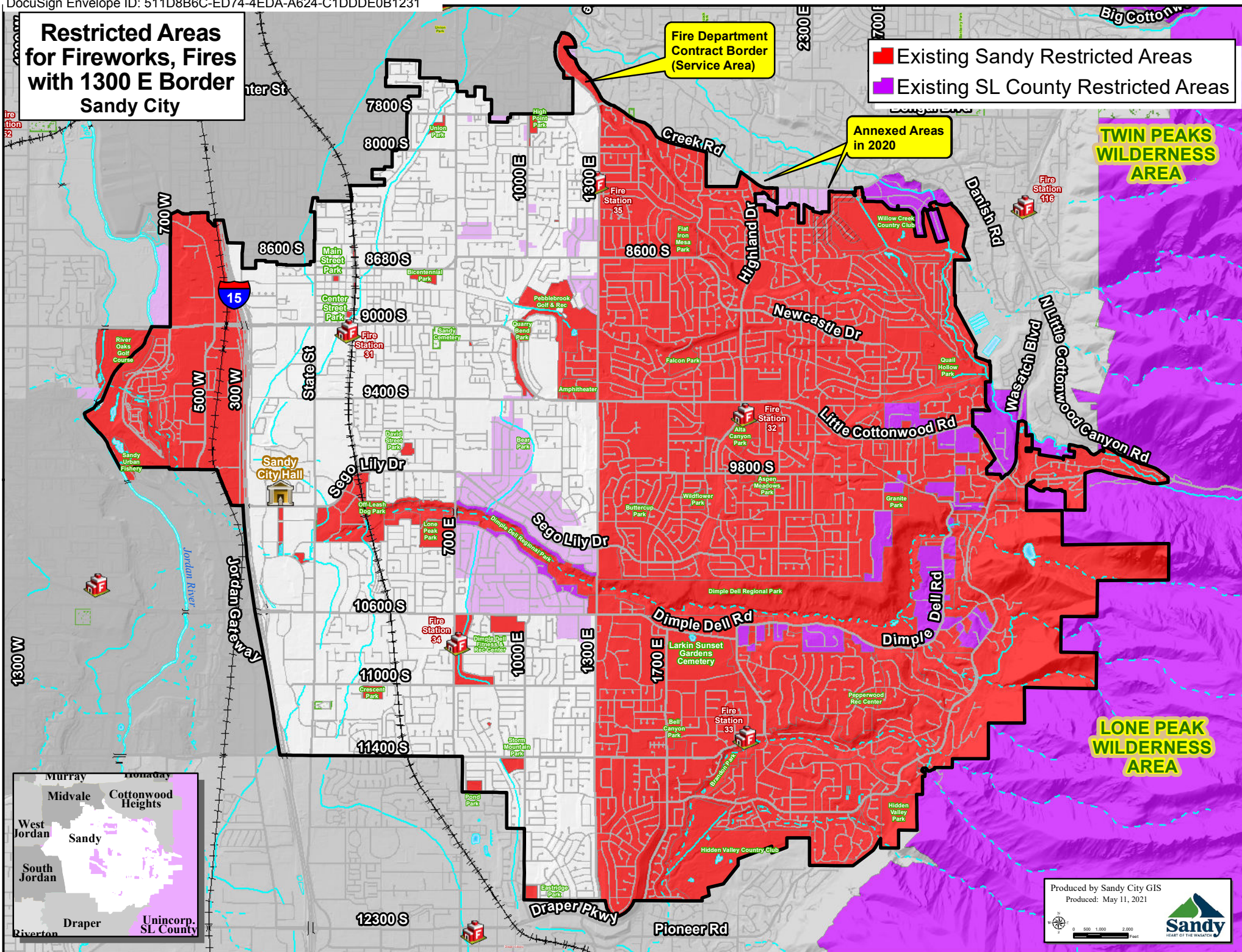
**Fire Department
Contract Border
(Service Area)**

 Existing Sandy Restricted Areas
 Existing SL County Restricted Areas


**Annexed Areas
in 2020**

**TWIN PEAKS
WILDERNESS
AREA**


**LONE PEAK
WILDERNESS
AREA**



Produced by Sandy City GIS
Produced: May 11, 2021



A north arrow pointing upwards, labeled with 'N' at the top, 'S' at the bottom, 'E' on the right, and 'W' on the left. Below the arrow is a scale bar with markings for 0, 500, 1,000, and 2,000 feet.



The Sandy City logo, featuring a stylized mountain peak in green and blue, with the word 'Sandy' in a large, bold, blue font. Below 'Sandy' is the tagline 'HEART OF THE WASATCH' in a smaller, blue, sans-serif font.