

ORDINANCE NO. 20240926-065

AN ORDINANCE AMENDING CITY CODE SECTION 12-4-64 (SPEED LIMITS) TO ESTABLISH A MAXIMUM SPEED LIMIT OF 15 MILES PER HOUR ON A SEGMENT OF VERTEX BOULEVARD AND 15 MILES PER HOUR ON A SEGMENT OF BAYTHORNE DRIVE FOR STUDENTS ATTENDING BLAZIER INTERMEDIATE SCHOOL; AND DECLARING AN EMERGENCY.

BE IT ORDAINED BY THE CITY COUNCIL OF THE CITY OF AUSTIN:

PART 1. Subsection (D) of City Code Section 12-4-64 (*Table of Speed Limits*) is amended to add:

Vertex Boulevard from 165 feet north of Baythorne Drive to 180 feet south of Baythorne Drive. (15 MPH) (SZ)

Baythorne Drive from 150 feet west of Vertex Boulevard to 150 feet east of Vertex Boulevard. (15 MPH) (SZ)

Baythorne Drive from 220 feet west of Ipswich Bay Drive to 195 feet east of Ipswich Bay Drive. (15 MPH) (SZ)

PART 2. The amendments made in this ordinance are based on the results of a traffic engineering investigation, or “speed study,” referenced in the Memorandum attached as Exhibit “A”.

PART 3. The amendments made in this ordinance shall be incorporated in alphabetical order and the existing entries reordered accordingly.

PART 4. Council finds that school will soon be in session and the need for a school zone at this site constitutes an emergency. Because of this emergency, this ordinance

takes effect immediately on its passage for the immediate preservation of the public peace, health and safety.

PASSED AND APPROVED

September 26, 2024 § Kirk Watson
§
§
§ Mayor

APPROVED: Deborah Thomas
Deborah Thomas
Interim City Attorney

ATTEST: Stephani Hall for
Myrna Rios
City Clerk

EXHIBIT A



MEMORANDUM

To: Traffic Study Files
From: City of Austin Transportation and Public Works Department
Date: August 1, 2024
Subject: Reduced Speed School Zone Investigation
Location: Vertex Boulevard and Baythorne Drive



Date(s) of Previous Investigation: None

A traffic engineering investigation has been conducted to determine if a reduced speed school zone is appropriate on Vertex Boulevard and Baythorne Drive for students attending Blazier Intermediate School.

The following information was collected and analyzed for this determination.

General Conditions

The streets of concern are located within the Goodnight Ranch Subdivision, a single-family neighborhood north of East Slaughter Lane.

Vertex Boulevard functions as a north-south Level 2 Collector between West Slaughter Lane and Nuckols Crossing Road with one travel lane in each direction. Blazier Intermediate School is located on Vertex Boulevard between East Slaughter Lane and Baythorne Drive.

Baythorne Drive functions as a Level 1 residential street with front facing single-family housing. It has an average pavement width of 37 feet.

Blazier Intermediate School

The Austin Independent School District (AISD) opened Blazier Intermediate School in the Fall of 2020. It has an enrollment capacity of approximately 700 students. The school site is located on the east side of Vertex Boulevard and the main entrance is located mid-block on Baythorne Drive between Vertex Boulevard and Ipswich Bay Drive. The parent drop-off utilizes the first driveway on Baythorne Drive east of Vertex Boulevard. The bus loop utilizes the second driveway east of

the parent drop-off driveway. Students walking and biking to Blazier Intermediate School access the main entrance on Baythorne Drive.

Existing Conditions

Vertex Boulevard has a 48 feet wide cross section that includes two travel lanes, one in each direction with a median separating the two. There are on-street parking pockets provided intermittently along Vertex Boulevard. There is one roundabout at the intersection of Baythorne Drive. At each leg of the roundabout are marked pedestrian crosswalks with pedestrian refuge at the splitter islands; however, vehicular traffic is uncontrolled through the crossings.

Baythorne Drive has an average 37 feet wide cross section that includes two travel lanes, one in each direction and on-street parking. The on-street parking is mostly utilized in front of single-family residences farther east from the intersection of Vertex Boulevard. At the intersection with Vertex Boulevard, there is a roundabout. At each leg of the roundabout are marked pedestrian crosswalks with pedestrian refuge at the splitter islands; however, vehicular traffic is uncontrolled through the crossings. Also, there is a pedestrian refuge island with a marked crosswalk farther east of Vertex Boulevard at Ipswich Bay Drive; however, the vehicular traffic is also uncontrolled through the crossing.

Proximity of Pedestrian Crossings to the School

Pedestrian crossing volume counts were observed in the morning drop-off and afternoon pick-up times at Blazier Intermediate School in April 2024. Students utilize the sidewalks on Vertex Boulevard and Baythorne Drive, the pedestrian crossings at the Vertex Boulevard roundabout, and the pedestrian refuge island on Baythorne Drive at Ipswich Bay Drive to access the main entrance of Blazier Intermediate School. The existing pedestrian crossings located at the roundabout of Vertex Boulevard and Baythorne Drive and at the pedestrian refuge island at Baythorne Drive and Ipswich Bay Drive are 240 feet and 0.2 miles from Blazier Intermediate School, respectively.

Pedestrian Crossing Volumes

It was observed that there were more than 30 pedestrians utilizing the crossings at the Vertex Boulevard and Baythorne Drive roundabout during the morning peak and more than 60 pedestrians utilizing the crossings during the afternoon peak.

Presence of Adult Crossing Guard or Student Safety Patrol

There are two adult crossing guards that are stationed at the Vertex Boulevard and Baythorne Drive roundabout pedestrian crossings. There was not a crossing guard at the pedestrian refuge island crossing on Baythorne Drive at Ipswich Bay Drive at the time of observations, but there are plans to evaluate stationing one at this location at the start of the Fall semester.

Sight Distance

There are no sight distance concerns for the school zones proposed on Vertex Boulevard or Baythorne Drive.

Sidewalks

Continuous sidewalks are present on the east and west sides of Vertex Boulevard between East Slaughter Lane and Nuckols Crossing Road.

Continuous sidewalks are present on south side of Baythorne Drive from Cattle Baron Path to Stambourne Street. There is sidewalk present on the north side of Baythorne Drive from Stambourne Street to approximately 515 feet east of Vertex Boulevard and then continues west of Vertex Boulevard.

Recommendation

Based on the analysis of the information provided in the above sections:

A reduced speed school zone of 15 miles per hour (mph) should be installed on Vertex Boulevard from 165 feet north of Baythorne Drive to 180 feet south of Baythorne Drive.

A reduced speed school zone of 15 miles per hour (mph) should be installed on Baythorne Drive from 150 feet west of Vertex Boulevard to 150 feet east of Vertex Boulevard.

A reduced speed school zone of 15 miles per hour (mph) should be installed on Baythorne Drive from 220 feet west of Ipswich Bay Drive to 195 feet east of Ipswich Bay Drive.

Figure 1 presents the investigation area and limits of the proposed reduced speed school zone on Vertex Boulevard. Figure 2 presents the investigation area and limits of the proposed reduced speed school zone on Baythorne Drive.

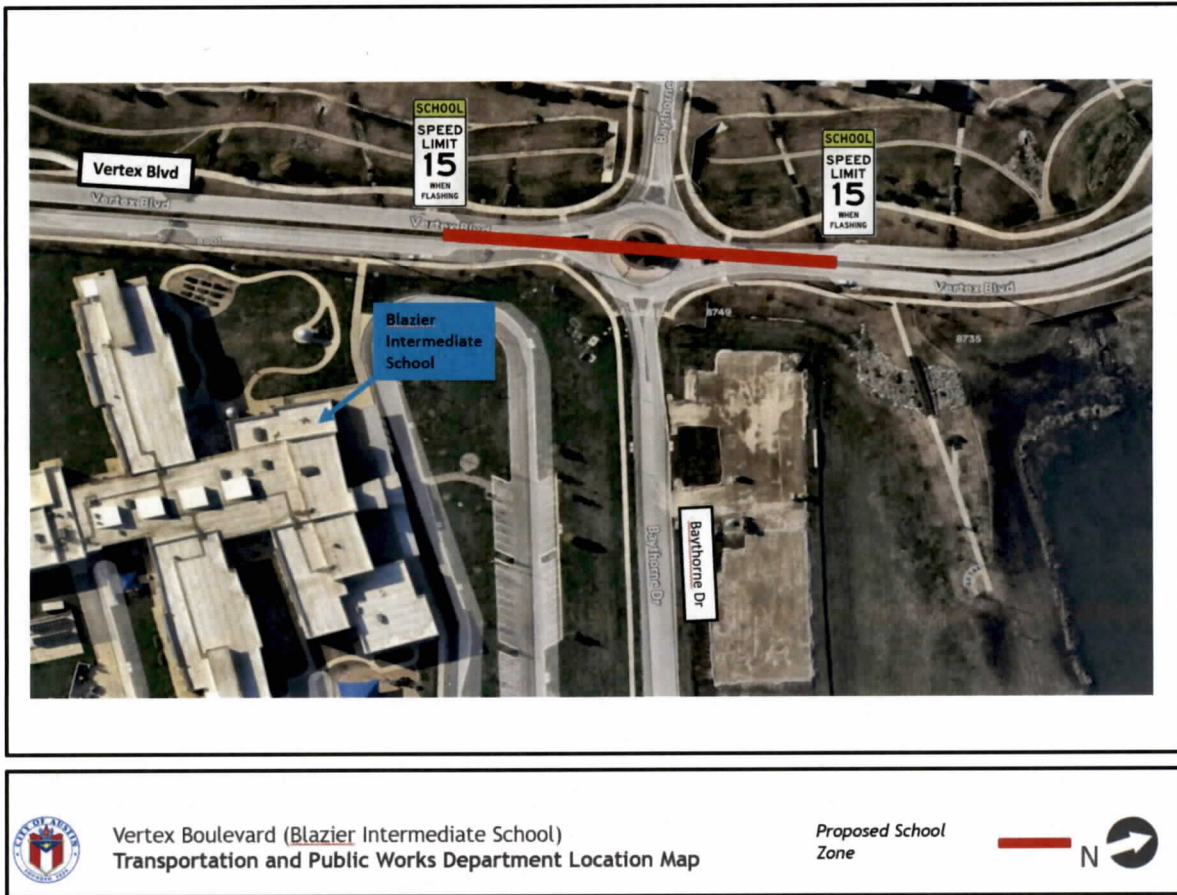


Figure 1: Proposed School Zone on Vertex Boulevard



Figure 2: Proposed School Zone on Baythorne Drive