

ORDINANCE 1722
ADOPTED 10/19/2015
PUBLISHED 10/22/2015

AN ORDINANCE AMENDING THE ZONING MAP OF THE CITY OF NORWICH ACCOMPANYING THE ZONING ORDINANCE OF THE CITY OF NORWICH BY CHANGING THE ZONING DESIGNATION OF TRACTS OR PARCELS OF LAND WITHIN THE CITY OF NORWICH.

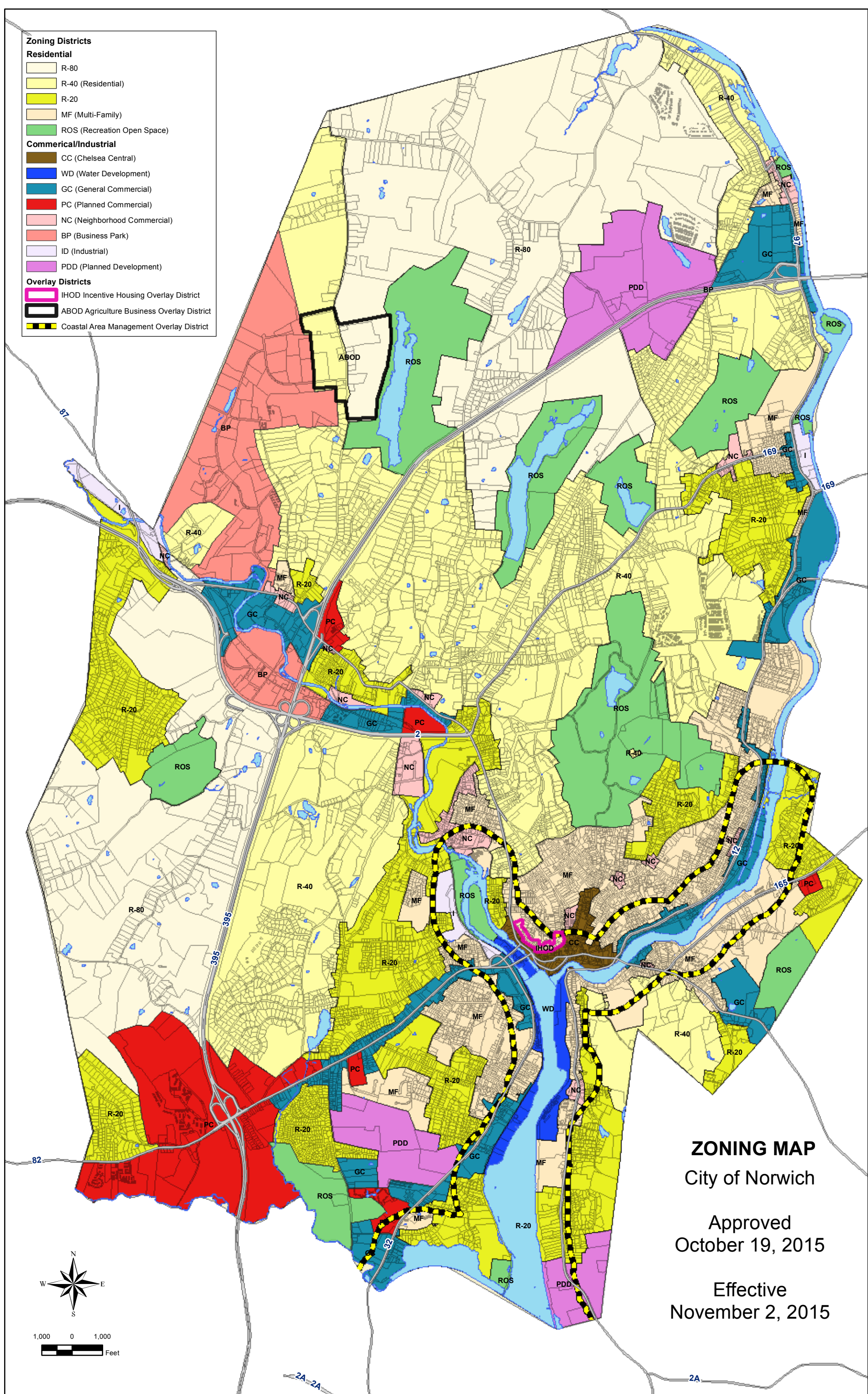
BE IT ORDAINED BY THE COUNCIL OF THE CITY OF NORWICH: that the “Zoning Map of the City of Norwich” is amended as follows:

Copies are available for inspection upon request at the Planning and Neighborhood Services Department, 23 Union Street; the Office of the City Clerk at City Hall, 100 Broadway; as well as on the City of Norwich web site: “www.norwichct.org” under a search for “Comprehensive Plan Update Project” or by pasting the following address into the browser: “<http://ct-norwich.civicplus.com/index.aspx?nid=678>.”

FURTHERMORE, BE IT ORDAINED BY THE COUNCIL OF THE CITY OF NORWICH THAT this ordinance shall become effective ten days after publication.

Mayor Deberay Hinchey

- Zoning Districts**
- Residential**
- R-80
 - R-40 (Residential)
 - R-20
 - MF (Multi-Family)
 - ROS (Recreation Open Space)
- Commerical/Industrial**
- CC (Chelsea Central)
 - WD (Water Development)
 - GC (General Commercial)
 - PC (Planned Commercial)
 - NC (Neighborhood Commercial)
 - BP (Business Park)
 - ID (Industrial)
 - PDD (Planned Development)
- Overlay Districts**
- IHOD Incentive Housing Overlay District
 - ABOD Agriculture Business Overlay District
 - Coastal Area Management Overlay District



ZONING MAP
 City of Norwich

Approved
 October 19, 2015

Effective
 November 2, 2015

