

Ordinance Number ORD-2022-1

AN ORDINANCE

To amend Subsection 1.11(a) of the Charter of the City of Douglasville, Georgia, to describe the corporate boundaries of the City consistent with previously enacted annexations and for purposes of reapportioning its municipal electoral districts consistent with the 2020 Census and other legal requirements; to adopt a map and supporting text for this purpose; to provide effective dates; to repeal any conflicting ordinances; and other purposes.

BE IT ORDAINED by the Mayor and City Council of Douglasville, Georgia, and it is hereby ordained by the authority thereof as follows:

SECTION ONE

Subsection 1.11(a) of the Charter of the City of Douglasville, Georgia is hereby amended to read as follows:

(a) The boundaries of this city shall be those existing on January 14, 2022, with such alterations as may be made from time to time in the manner provided by law. The boundaries existing on January 14, 2022 are as described below, as to blocks and tracts according to the 2020 United States Decennial Census:

WARD 1

130970805052002	130970805081002	130970805081013	130970805082010	130970806071006
130970805052009	130970805081003	130970805081015	130970805083001	130970806071007
130970805052010	130970805081004	130970805081016	130970805083002	130970806071009
130970805052011	130970805081005	130970805082000	130970805083014	130970806071013
130970805052012	130970805081006	130970805082001	130970805092002	130970806071015
130970805052013	130970805081007	130970805082002	130970806082026	130970806082025
130970805053000	130970805081009	130970805082003	130970806082027	130970806082028
130970805053001	130970805081010	130970805082004	130970806082046	130970806082029
130970805053002	130970805081011	130970805082006	130970805092004	130970806082044
130970805053003	130970805081012	130970805082007	130970806071005	130970806082047

WARD 2

130970802012014	130970803032003	130970803032017	130970803032027	130970803033015
130970802012016	130970803032004	130970803032018	130970803032028	130970803033016
130970802012021	130970803032006	130970803032019	130970803032029	130970803033017
130970802031001	130970803032007	130970803032020	130970803032030	130970803033023
130970802031014	130970803032011	130970803032021	130970803032031	130970803041002
130970802032002	130970803032012	130970803032022	130970803032032	130970803041003
130970802032003	130970803032013	130970803032023	130970803032033	130970803041004
130970802032004	130970803032014	130970803032024	130970803032034	130970803041005
130970802032006	130970803032015	130970803032025	130970803033002	130970803041006
130970802042010	130970803032016	130970803032026	130970803033014	130970803041007

130970803041008	130970803041019	130970803042008	130970803042018	130970803042028
130970803041009	130970803041020	130970803042009	130970803042019	130970803042029
130970803041010	130970803042000	130970803042010	130970803042020	130970803042030
130970803041011	130970803042001	130970803042011	130970803042021	130970803042031
130970803041012	130970803042002	130970803042012	130970803042022	130970803042032
130970803041013	130970803042003	130970803042013	130970803042023	130970803042033
130970803041014	130970803042004	130970803042014	130970803042024	130970803042034
130970803041015	130970803042005	130970803042015	130970803042025	130970803043000
130970803041017	130970803042006	130970803042016	130970803042026	130970803043001
130970803041018	130970803042007	130970803042017	130970803042027	130970803043002

130970803043004	130970803043016	130970804031000	130970806082012	130970806081010
130970803043005	130970803044000	130970804031003	130970806082015	130970806081011
130970803043006	130970803044001	130970804031018	130970806082017	130970806081012
130970803043007	130970803044002	130970804081021	130970806082020	130970806081013
130970803043008	130970803044003	130970805052007	130970806082037	130970806081014
130970803043009	130970803044004	130970805052008	130970806082038	130970806081016
130970803043010	130970803044006	130970806082002	130970806082048	130970806081018
130970803043011	130970803052000	130970806082003	130970803052003	130970806081020
130970803043013	130970803052004	130970806082004	130970803052015	130970806081022
130970803043015	130970803054009	130970806082005	130970806081008	130970806082033

130970806082041				
130970806082042				
130970806082043				

WARD 3

130970803052025	130970803051005	130970803051016	130970803052017	130970803061008
130970803052027	130970803051006	130970803051017	130970803052018	130970803061009
130970803052029	130970803051007	130970803052006	130970803052019	130970803061010
130970803062007	130970803051008	130970803052007	130970803052023	130970803061011
130970803062010	130970803051010	130970803052008	130970803052024	130970803062000
130970803062013	130970803051011	130970803052009	130970803053003	130970803062001
130970803062014	130970803051012	130970803052010	130970803053007	130970803062002
130970803051002	130970803051013	130970803052011	130970803053008	130970803062003
130970803051003	130970803051014	130970803052012	130970803061000	130970803062004
130970803051004	130970803051015	130970803052014	130970803061003	130970803062005

130970803062006	130970803071010	130970804081005		
130970803062008	130970803071011			
130970803062009	130970803071015			
130970803063001	130970803072000			
130970803063002	130970803072001			
130970803063003	130970803072002			
130970803063005	130970803072005			
130970803063006	130970803072006			
130970803063007	130970803072007			
130970803071005	130970803072009			

WARD 4

130970805092007	130970805092019	130970806072013		
130970805092010	130970805122000			
130970805091000	130970805122002			
130970805091001	130970805122007			
130970805091018	130970806071000			
130970805092006	130970806071001			
130970805092012	130970806071019			
130970805092013	130970806072000			
130970805092014	130970806072004			
130970805092015	130970806072007			

WARD 5

130970801042007	130970801051010	130970801052018	130970801072018	130970806024004
130970801042008	130970801051013	130970801052019	130970801072019	130970806024005
130970801042009	130970801051014	130970801052025	130970802032005	130970806024007
130970801043003	130970801051015	130970801052028	130970806021001	130970806024008
130970801043006	130970801051019	130970801052030	130970806021002	130970806024009
130970801043013	130970801051020	130970801052031	130970806021004	130970806024010
130970801043014	130970801051027	130970801052033	130970806024000	130970806024011
130970801043017	130970801051041	130970801063032	130970806024001	130970806024012
130970801051003	130970801052016	130970801072007	130970806024002	130970806024013
130970801051007	130970801052017	130970801072014	130970806024003	130970806024014

130970806024015	130970806024039			
130970806024016	130970806024041			
130970806024017	130970806024042			
130970806024024				
130970806024025				
130970806024028				
130970806024030				
130970806024036				
130970806024037				
130970806024038				

The boundaries of this city at all times shall be shown on a map, a written description, or any combination thereof, to be retained permanently in the office of the clerk of the city and to be designated, as the case may be: "Official Map (or Description) of the corporate limits of the City of Douglasville, Georgia." Photographic, typed, or other copies of such map or description certified by the clerk shall be admitted as evidence in all courts and shall have the same force and effect as with the original map or description.

SECTION TWO

Pursuant to O.C.G.A. § 36-35-4.1, the map and supporting text attached as Exhibit A is adopted as the City of Douglasville reapportionment plan, based on the 2020 Census.

SECTION THREE


This ordinance shall become effective on the date after the second enactment.

SECTION FOUR

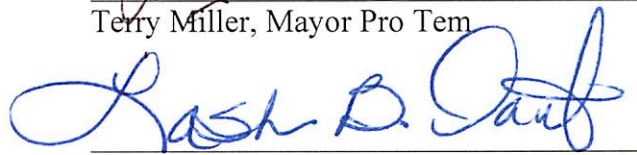
All ordinances and parts of ordinances in conflict with this ordinance are hereby repealed.

First enactment this the 18th day of January, 2022.


Rochelle Robinson, Mayor


Terry Miller, Mayor Pro Tem


Mark Adams, Councilmember



Dr. LaShun B. Danley, Councilmember


Sam Davis, Councilmember


Howard M. Estes, Councilmember

ABSENT

Nycole N. Miller, Councilmember



Chris "Coach" Watts, Councilmember

Attest: 
Vicki L. Acker, City Clerk

Adopted and ordained this the 7th day of February, 2022.


Rochelle Robinson, Mayor


Terry Miller, Mayor Pro Tem


Mark Adams, Councilmember



Dr. LaShun B. Danley, Councilmember


Sam Davis, Councilmember


Howard M. Estes, Councilmember

ABSENT

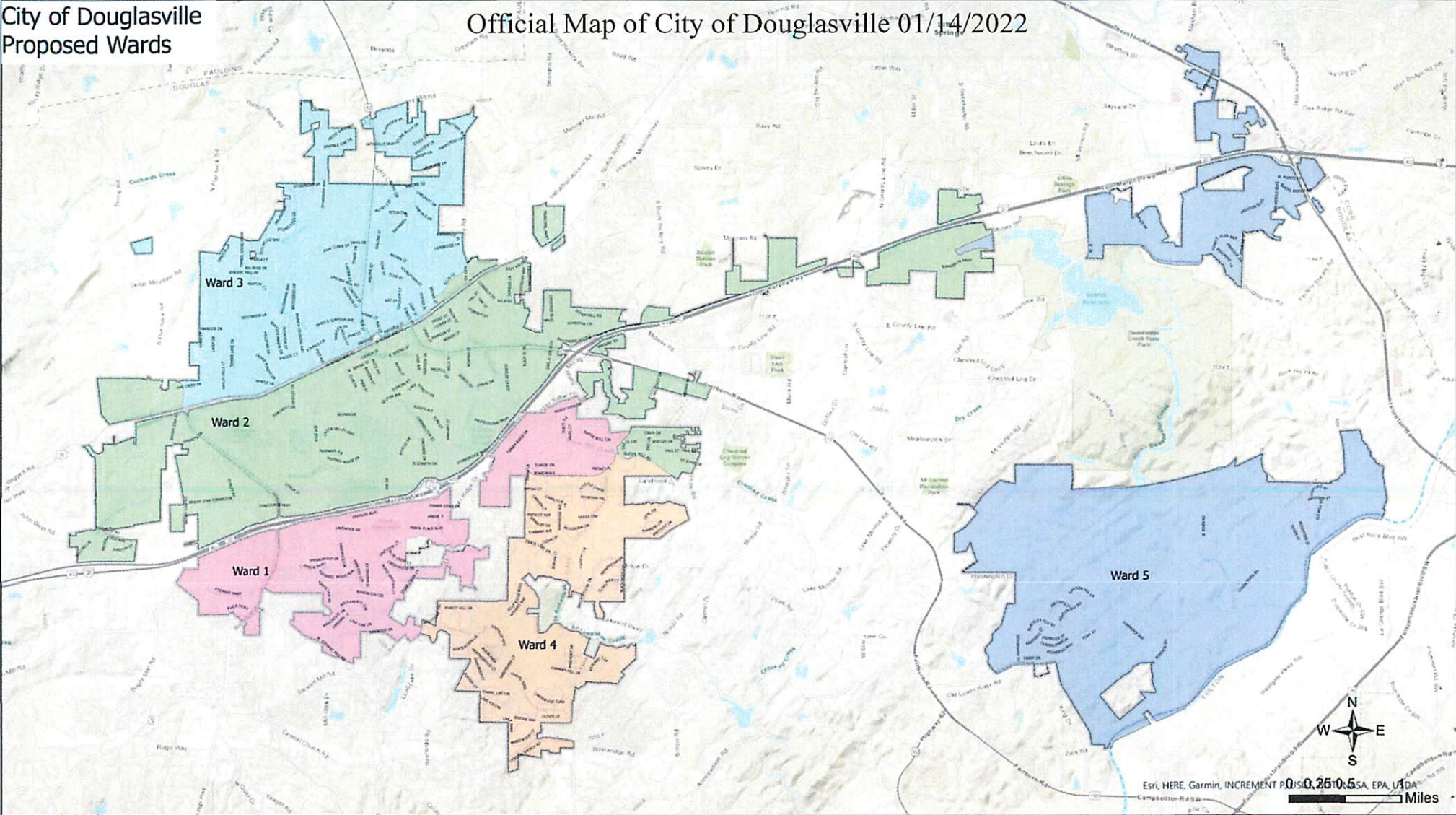
Nycole N. Miller, Councilmember


Chris "Coach" Watts, Councilmember

Attest: 
Vicki L. Acker, City Clerk

City of Douglasville
Proposed Wards

Official Map of City of Douglasville 01/14/2022



- Ward 1
- Ward 2
- Ward 3
- Ward 4
- Ward 5
- City Limit



City of Douglasville GIS Department
Map Disclaimer:
Suburban Consulting Engineers makes no warranties with respect to the accuracy and completeness of the information on this map. It is provided "as-is".



PROPOSED WARD MAP 01/14/2022

Ward	Population	Deviation	% Deviation	Ideal Population
1	4,838	(112)	-2.26%	4,950
2	9,912	12	0.12%	9,900
3	10,054	154	1.56%	9,900
4	4,964	14	0.28%	4,950
5	4,882	(68)	-1.37%	4,950

Total	34,650
Overall Range	3.82%

EXISTING WARD MAP

Ward	Population	Deviation	% Deviation	Ideal Population
1	5,225	275	5.56%	4,950
2	9,695	(205)	-2.07%	9,900
3	10,167	267	2.70%	9,900
4	5,039	89	1.80%	4,950
5	4,524	(426)	-8.61%	4,950

Total	34,650
Overall Range	14.17%