

TOWN OF BURRILLVILLE

Office of Town Clerk

Email: townclerk@burrillville.org



Phone: 401-568-4300, ext. 133

Fax: 401-568-0490

RI Relay 1-800-745-5555 (TTY)

The Town Council of the Town of Burrillville hereby ordains as follows:

The Revised General Ordinances, Town of Burrillville, Rhode Island, 2004 as amended, Chapter 30 entitled Zoning, are hereby amended by changing the zoning district of the properties listed below from Farming/Residential (F-5) to Single Family Residential (R-7), as follows:

Chapter 30 - ZONING

Sec. 30-31. Zoning districts and zoning maps.

(a) *Districts generally.*

- (1) For the purpose of this chapter, the town is divided into ~~ten~~ eleven zoning districts and four overlay districts designated as follows:

F-5	Farming/Residential
F-2	Farming/Residential
R-40	Suburban Residential
R-20	Suburban Residential
R-12	Village Residential
<u>R-7</u>	<u>Single Family Residential</u>
OS	Open Space (state land)
VC	Village Commercial (formerly C-1)
GC	General Commercial (formerly C-2)
LI	Limited Industrial (formerly M-1)
GI	General Industrial (formerly M-2)
A-80	Aquifer Overlay/Groundwater Protection
A-100	Aquifer Overlay/Groundwater Protection
A-120	Aquifer Overlay/Groundwater Protection
DMD	Development Management District Overlay Zone

- (2) The farming districts, F-5 and F-2, are intended to preserve the town's rural heritage and landscape by providing large, broad lots on which the raising of animals and crops may be done with minimal impact on neighboring properties.
- (3) The suburban residential districts, R-40 and R-20, are intended to provide for modern residential development via both standard and cluster subdivision in areas not serviced by public water and sewers.
- (4) The village residential district is intended to provide a variety of residential types including single-family, two-family and multifamily development in a form and style in keeping with existing village architecture.
- (5) The single family residential district is intended to allow higher density single family residential development of pre-existing lots in areas where surrounding zoning is much less dense, and where public water and sewer are not available.

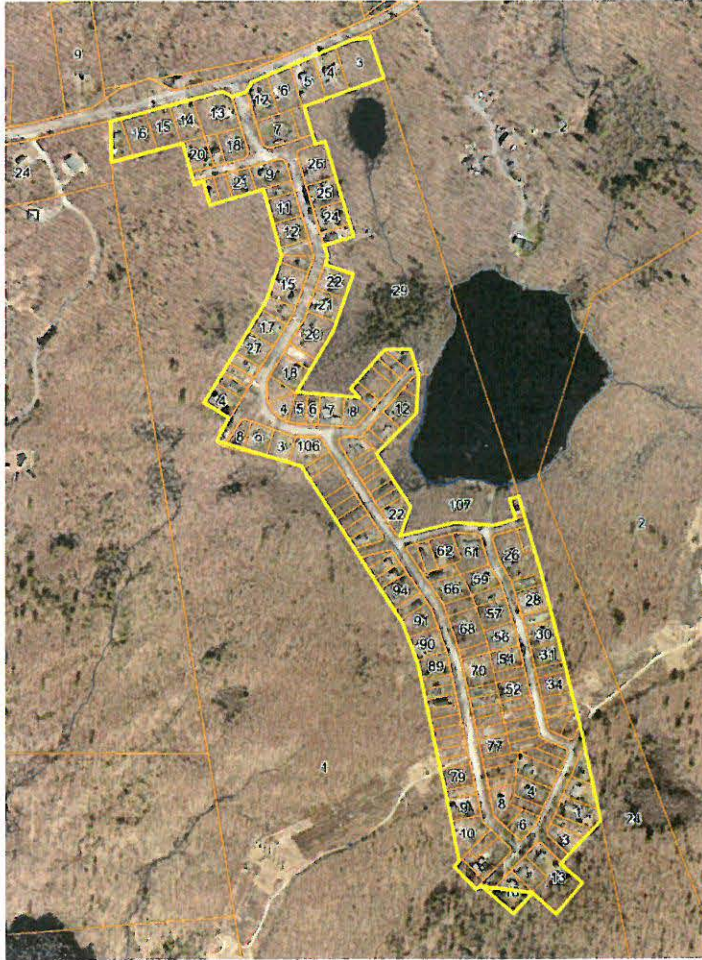
- (56) The village commercial district is intended to reinforce the existing mix or texture of the older mill villages in Burrillville. It is seen primarily as being made up of a variety of businesses, predominantly in the service sector, occupying small buildings or with small floor areas. Parking will generally be limited in accordance with regulations set forth under section 30-156, Off-street parking and loading, subsections (a)(2) and (a)(3), as per the discretion of the site plan review process as directed by the planning board.
- (67) The general commercial district is envisioned as a broader mix of uses, though still heavy in services and still predominately in small buildings or occupying small spaces. In this district, there will be a heavier reliance on on-site parking; however, where general commercial districts coincide with existing village development, on-street parking will still be allowed for businesses in older buildings.
- (78) The limited industrial district is intended as a business incubator district with a variety of small light industrial uses. Traffic, both due to trucking and employees, is minor. It is expected that successful, growing businesses will outgrow this district and move to a general industrial location.
- (89) The general industrial district is intended to be a modern, light industrial area with well-landscaped buildings on relatively large lots. The amount of traffic generated, both by employees and from trucks servicing the industry, will be substantial.
- (910) For the purposes of consistency with the town's comprehensive plan, agricultural-residential districts are low density, suburban-residential districts are medium density and the village-residential district is high density.

- (b) *Construction of this chapter.* In the instance of uncertainty in the construction or application of any section of this chapter, the chapter shall be construed in a manner that will further the implementation of, and not be contrary to, the goals and policies and applicable elements of the comprehensive plan.
- (c) *Custodian of zoning ordinance and map.* The boundaries of the above districts are hereby established as shown on a map titled "Burrillville Zoning Map" as amended, filed at the office of the town clerk of the Town of Burrillville. Said map is hereby declared to be a part of this chapter.

The town clerk shall be the custodian of the zoning chapter and the zoning map(s). The planning department shall maintain and from time to time update, in conformance with approved amendments, the text and/or map(s) which comprise the zoning chapter.

Amendments which affect the zoning map shall be depicted on the official map within 90 days of enactment. The planning board shall review the zoning chapter and zoning map at intervals and, whenever changes are made to the town's comprehensive plan, they shall identify any necessary changes and forward them to the town council as provided under amendment procedures.

- (d) *Lots divided by a zoning district boundary.* Where a lot is divided by a zoning district boundary, the regulation for the zoning district for the use intended shall apply, except that no district shall, in effect, be extended more than 30 feet into an adjoining district, or beyond a lot line, whichever is less.



Parcel Numbers:
 117-012, 117-013, 117-014, 117-015, 117-016,
 117-017, 117-018, 117-019, 117-020, 117-021,
 117-022, 117-023, 117-027, 117-028, 117-029,
 118-003, 118-004, 118-005, 118-006, 118-007,
 118-009, 118-010, 118-011, 118-012, 118-013,
 118-014, 118-015, 118-016, 118-017, 118-018,
 118-019, 118-020, 118-021, 118-022, 118-023,
 118-024, 118-025, 118-026, 118-030, 118-031,
 118-032, 118-033, 134-003, 134-004, 134-008,
 134-009, 134-010, 135-003, 135-004, 135-005,
 135-006, 135-007, 135-008, 135-010, 135-012,
 135-013, 135-016, 135-018, 135-019, 135-020,
 135-022, 135-023, 135-026, 135-027, 135-028,
 135-029, 135-030, 135-031, 135-033, 135-039,
 135-040, 135-041, 135-043, 135-053, 135-054,
 135-056, 135-058, 135-059, 135-061, 135-063,
 135-065, 135-066, 135-068, 135-069, 135-070,
 135-072, 135-073, 135-078, 135-086, 135-087,
 135-089, 135-090, 135-091, 135-092, 135-093,
 135-094, 135-095, 135-096, 135-097, 135-098,
 135-099, 135-100, 135-101, 135-102, 135-103,
 135-104, 135-106, 152-001, 152-002, 152-003,
 152-004, 152-006, 152-008, 152-009, 152-010,
 152-012, 152-013, 152-014, 152-016, 152-017.

This amendment shall take effect ten (10) days after passage.

Adopted this 26th day of February 2025.

Donald A. Fox, President
 Burrillville Town Council



ATTEST:

Vicki T. Martin, Town Clerk