

Front Load Dumpster Enclosures Specification & Design Requirements

RAD REQUIRES that this specifics & requirements packet be checked off, answered and returned to RAD for design approval. Failure to meet specifications can result non-service & service fees.

Questions? Call 208.220.7721

Return this document to RAD via:

Info@RadCurbside.com

Mail to: PO Box 761 Driggs ID 83422

Physical Copy Drop Off: 455 S Main St Driggs ID 83422



Waste Generation & Enclosure Details

RAD REQUIRES that the specifications in this packet be checked off / answered and returned to RAD for design approval
RAD does NOT require customers to have enclosures for their dumpsters, however local code may.

Capacity & Population Questions:

- What is the maximum number of people and/or businesses the dumpsters need to provide capacity for? _____
 - Business type: _____
- How many dumpsters will need to fit in the enclosure? _____
- Do recycling receptacles or cardboard dumpsters need to fit in the enclosure? __Y / N __ Quantity _____
- Please provide an overhead view of property inclusive of measurements

Enclosure 40' Approach & Level Ground

- "Approach Area" = 40-feet (straight) x widest part of enclosure / pad
- Approach requirement is 40-feet of flat surface leading up to the front of the enclosure
- Enclosure pad, where dumpsters remain, is NOT part of the 40-feet
- Enclosure pad must be a level surface, a concrete pad is recommended and preferred
- No rolled curbs, curbs, parking spaces, grass areas, plantings, objects of any type or uneven ground may overlap approach area

Roofs (NOT Required)

- If there is a roof on the enclosure
- Front roof line minimum height is 9ft (opening to access dumpster) *height is measured from ground to lowest part of front roofline
 - A single pitch shed roof sloping away from front is recommended
 - Minimum 7ft roof line height in the back. *height is measured from ground to lowest part of roofline

Door Specifications & Requirements

RAD does NOT require Doors and prefers that there aren't doors.

Doors:

Question: Are doors required on the enclosure by developer or jurisdiction's code? Circle one: Y / N

*Why do we recommend no doors? They tend to get stuck, bend & break due to snow & ice. The doors are often a source of frustration for tenants, property managers & our operators.

Key Door Design Requirements *If enclosure doors are required...*

- 10-Inch minimum clearance from ground to bottom of doors
- Overbuild the hinges, double the carry weight of the hinges and the structural strength so the doors don't sag over time
- Outer Doors are required to swing freely beyond 185 degrees. Hinge location is critical**
- Must have a mechanism to keep doors open & closed – the wind blows them shut, as does the door weight alone
- Mechanism for open/closed...Only use cross bolts that lock between the doors in the middle of the doors, the cross bolt should have at least 4" of overlap.
 - No wheels or attachments to the ground, snow and ice build up don't allow these to function and break them.
 - Do NOT use "down bolts" that go from the doors down to the ground as locking mechanisms (ice & snow prohibits for working)

Failure to follow door design will result in service charges, more details in following pages.

RAD is not responsible for any damages if there is failure to follow any part of the enclosure design, approach, etc.

ENCLOSURE APPROACH

Side View / Vertical Clearance

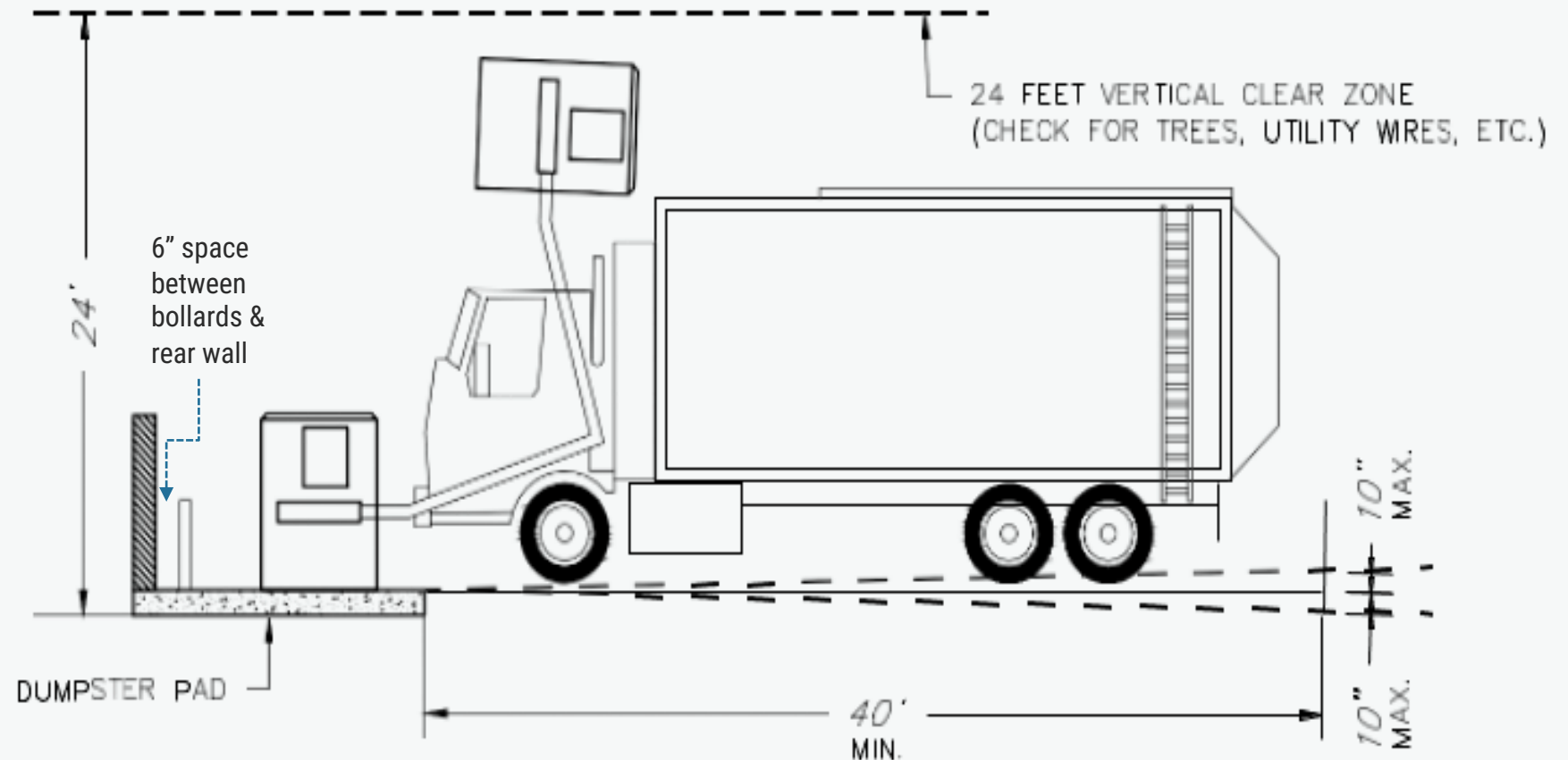
(NOT TO SCALE)

Approach Design Requirements

- Approach slope shall not vary more than 10-inches incline or decline over 40 feet (2% slope)
- No rolled curbs allowed within the approach
- Dumpster(s) locations may NOT be located in right of way or fire lanes.
- Obstacles shall not be located at the end of the approach such as trees, curbs, etc.

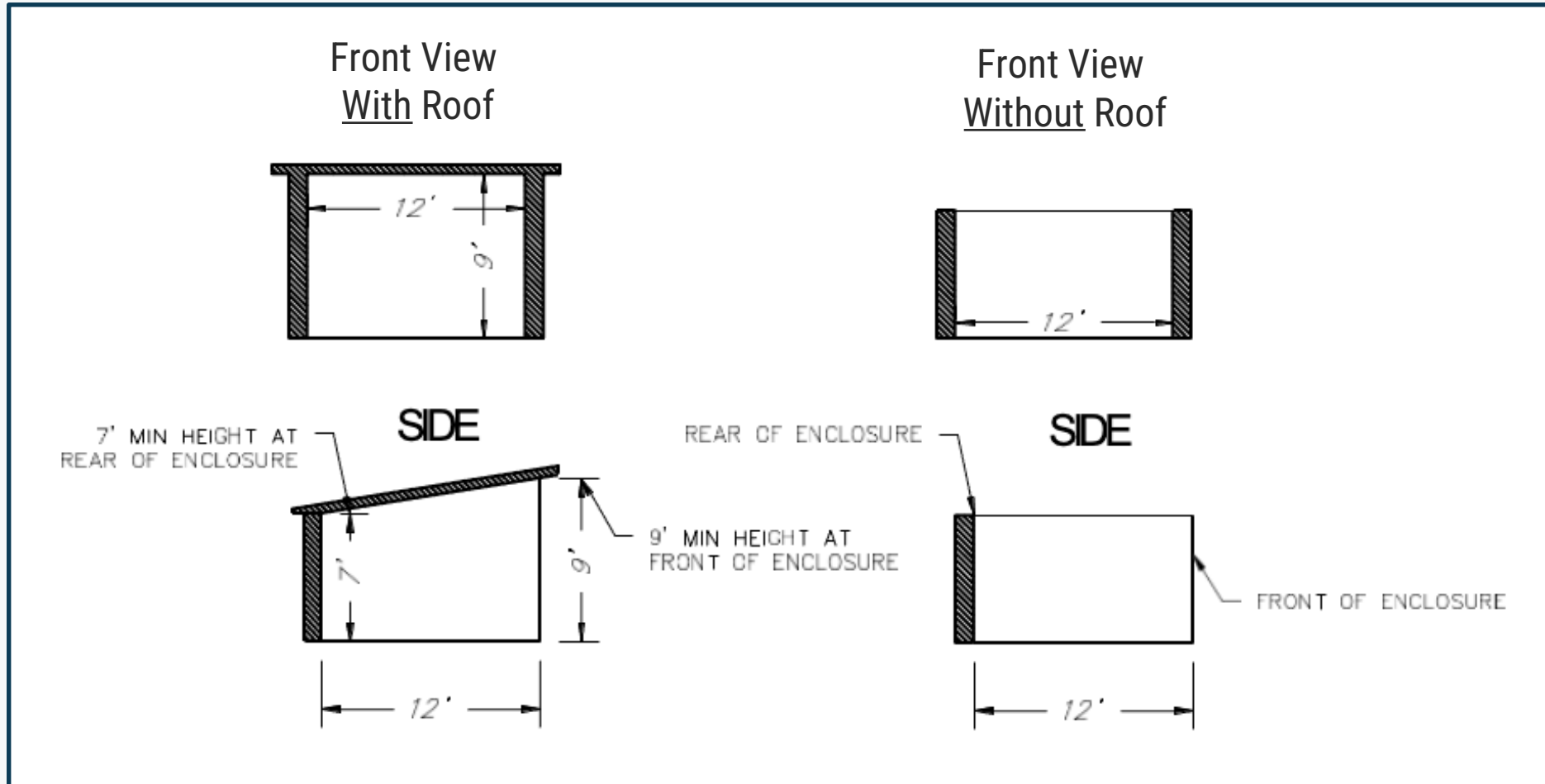
Service Requirements

- Property Owner/Tenant is responsible for maintaining dumpster enclosures and adequate access /ingress (accessibility for truck)
- Property Owner/Tenant is responsible for maintaining a cleared-out enclosure - i.e., free of excess waste, snow/ice, bulky items, storage, etc.



SINGLE DUMPSTER ENCLOSURE

Design Specifications



10 5 0 10 20

SCALE: 1" = 10'
(8.5" X 11" SHEET)

Single Dumpster Enclosure Door Specifications

Top View & Hinge Detail

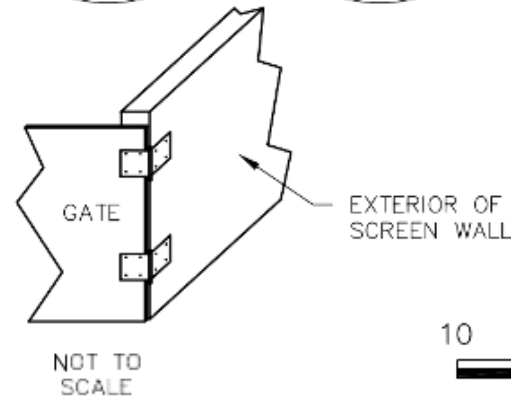
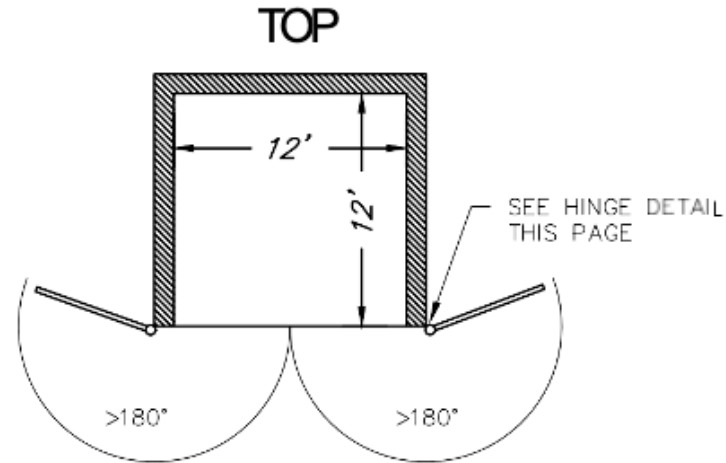
Door Requirements

- ❑ Doors are NOT recommended, they tend to break, get stuck, bent, frustrate tenants due to snow and ice

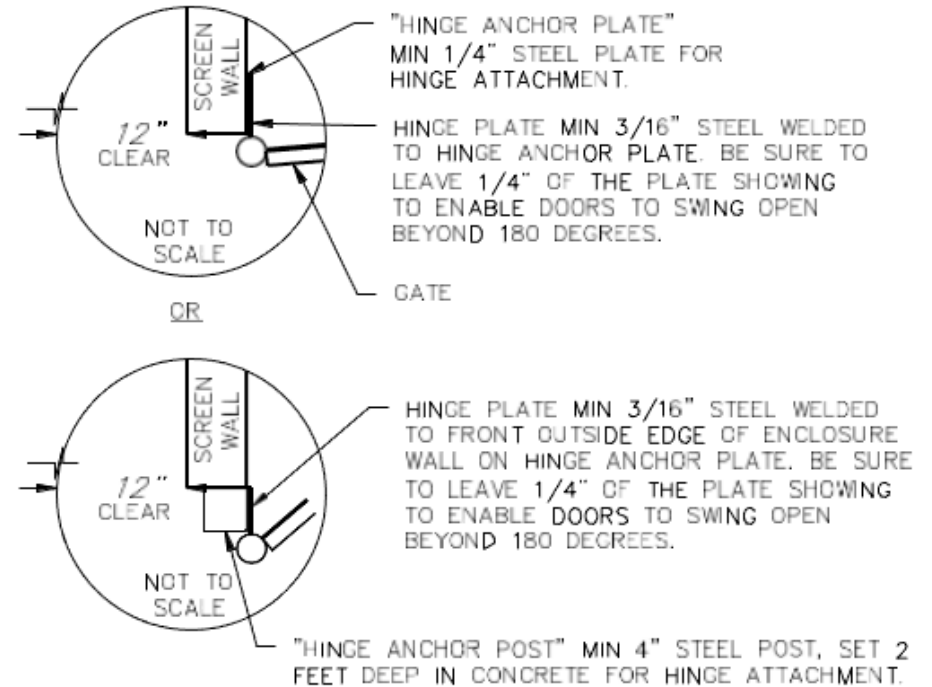
Door Design Requirements

**As you read this, picture 2-inches to 2-feet of snow or ice inhibiting the door function*

- ❑ 10-inch min/ clearance from ground to bottom of doors
- ❑ No wheels or attachments to the ground from the doors
- ❑ Doors must swing freely beyond 180-degrees.
- ❑ Doors shall be constructed to support its own weight and not sag over time. Make doors as light as possible, utilize cross member bracing.
- ❑ Overbuild the hinges, double the carry weight of the hinges and the structural strength
- ❑ Doors must have a a mechanism to keep doors both closed and open – during service, the wind will blow doors closed. Just the weight will make the door move.
 - ❑ Mechanism Closed – Cross bolts w/ 4" overlap
 - ❑ Mechanism Open – pin bolt at hinge



HINGE DETAIL



SCALE: 1" = 10'
(8.5" X 11" SHEET)

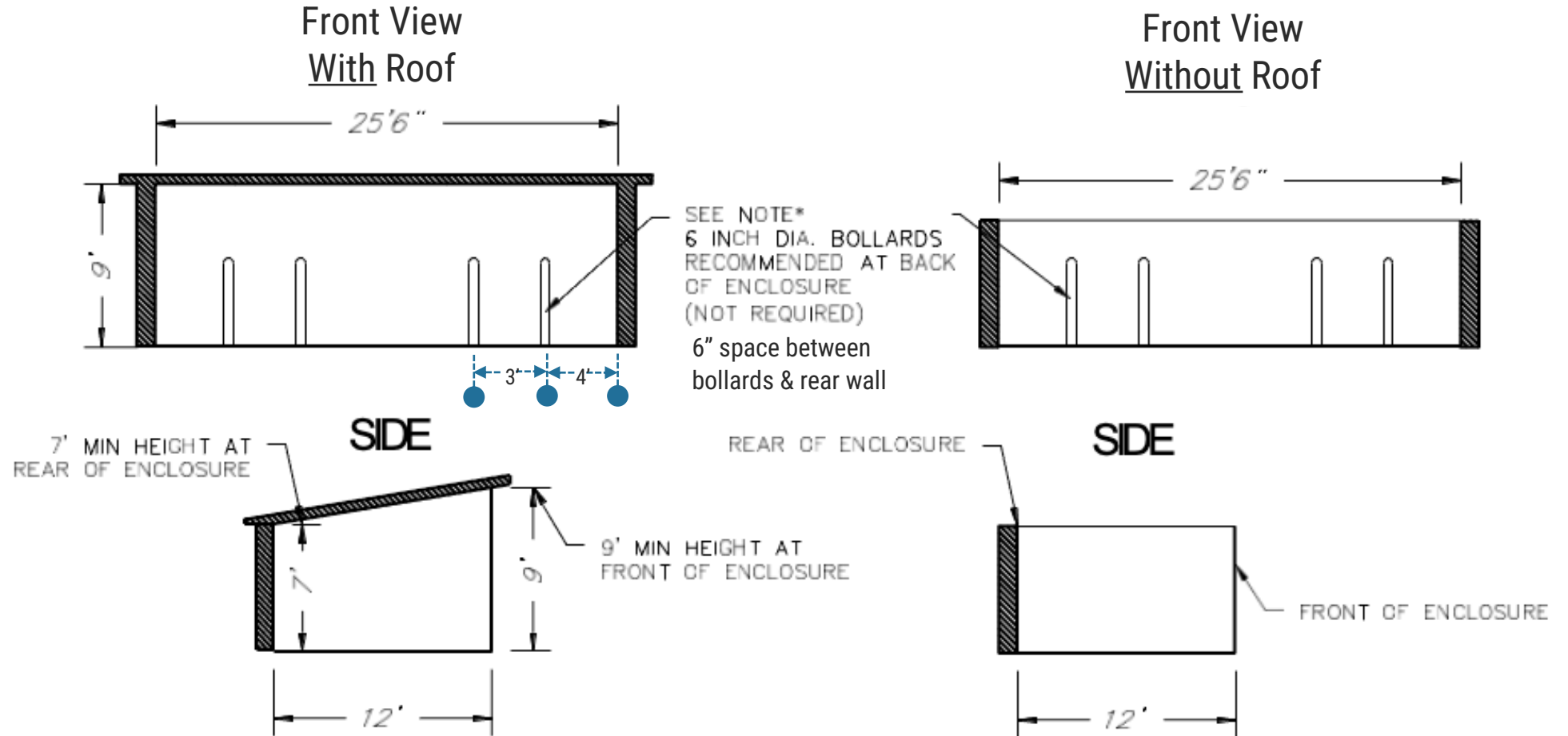
DUAL DUMPSTER ENCLOSURE

Without Center Post Hinge / No Doors

Multi-Dumpster Design - Additional Requirements

- ❑ Depth of Enclosure: 12-foot deep
- ❑ Each dumpster shall have a 12-foot width clearance + operational clearances
- ❑ 2 dumpsters = 25'6" clearance

*Assumes no doors



10 5 0 10 20

SCALE: 1" = 10'
(8.5" X 11" SHEET)

Dual Dumpster Enclosure Door Specifications

With Center Post & Doors with Hinge Detail

Door Requirements

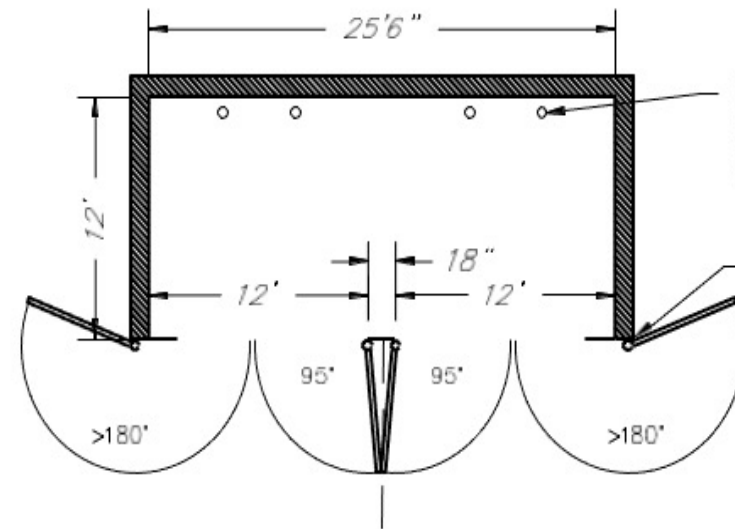
- ☐ Doors are NOT recommended, they tend to break, get stuck, bent, frustrate tenants due to snow and ice

Door Design Requirements

**As you read this, picture 2-inches to 2-feet of snow or ice inhibiting the door function*

- ☐ 10-inch min/ clearance from ground to bottom of doors
- ☐ No wheels or attachments to the ground from the doors
- ☐ Outer Doors must swing freely beyond 180-degrees.
- ☐ Inner Doors must swing freely beyond 95-degrees
- ☐ Doors shall be constructed to support its own weight and not sag over time. Make doors as light as possible, utilize cross member bracing.
- ☐ Overbuild the hinges, double the carry weight of the hinges and the structural strength
- ☐ Doors must have a mechanism to keep doors both closed and open – during service, the wind will blow them closed. Just the weight will make the door move.
 - ☐ Mechanism Closed – Cross bolts w/ 4" overlap
 - ☐ Mechanism Open – pin bolt at hinge

Top View
Dual Dumpster Enclosure



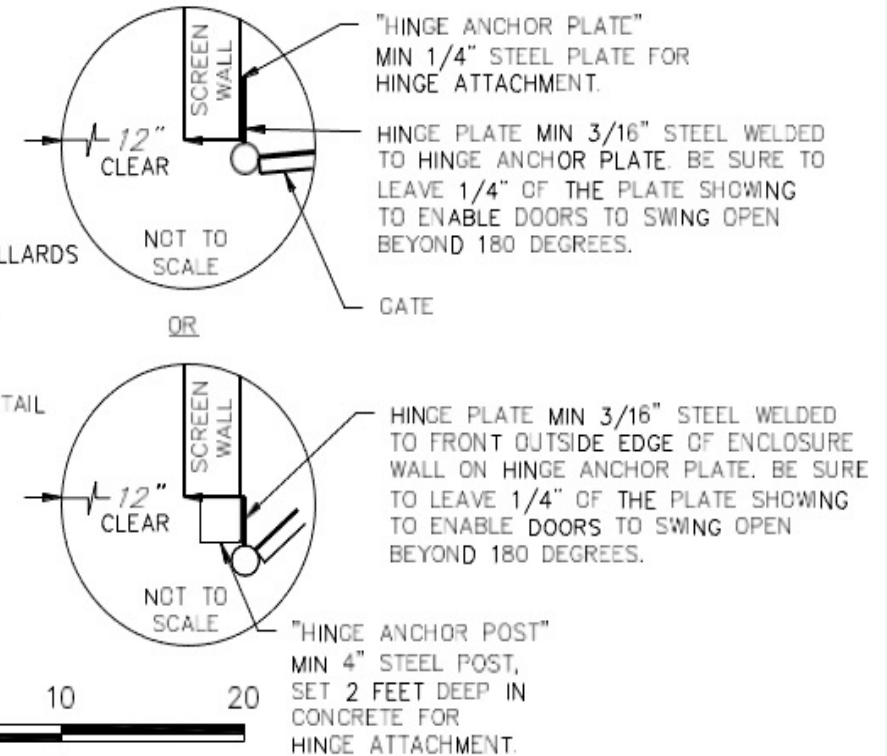
SEE NOTE*:
6 INCH DIA. BOLLARDS
RECOMMENDED
(NOT REQUIRED)

SEE HINGE DETAIL
THIS PAGE



SCALE: 1" = 10'
(8.5" X 11" SHEET)

HINGE DETAIL



Acknowledgement for Dumpster Enclosure Specifications

Acknowledgement:

The details outlined by the the Dumpster Enclosure specifications and requirements provided by RAD Curbside, Inc are clear, accepted and understood. I acknowledge receipt of and agree to abide by and correctly relay the specifications and requirements outlined within as a condition of service by RAD Curbside, Inc. It is understood that services may not be provided, additional fees may apply and any damage liability by RAD is waived if the enclosure is not built to each specification and reviewed by. It is understood that if I have questions or want to request review for amendment regarding any specifications or requirement, I will communicate with RAD Curbside via email at info@radcurbside.com.

Builder: _____

Designer: _____

RAD Curbside, Inc: (Receipt Acknowledgement only)

Name: _____

Name: _____

Name: _____

Signature: _____

Signature: _____

Signature: _____

Date: _____

Date: _____

Date: _____

